

## RIVERS: River Inventory by Volunteers for Efficient Restoration Strategies

### Overview:

The RIVERS mobile application is a convenient way for Trout Unlimited chapters to collect data on and map disturbances on their home waters while fishing or conducting a watershed inventory. This basic information is stored online and can be queried later on your phone or desktop computer to prioritize conservation projects, including having potential projects at your fingertips when funding opportunities arise. The information collected is intended to be a broad description of the disturbance with photographic evidence that is geolocated (eg, GPS location). More detailed follow-up surveys may be required as needed to determine project potential.



### Downloading RIVERS:

RIVERS is not a mobile app itself, but rather is a 'Survey' within the mobile app called **Survey123 for ArcGIS**

**Step 1:** Download the Survey123 for ArcGIS mobile app to your phone:

- Use the App Store with an iPhone, or Google Play with an Android phone
- Or, scan the QR code below to be prompted to download Survey123 for ArcGIS from your respective app store



Survey123 app icon

**Step 2:** Download the RIVERS survey form within the Survey123 for ArcGIS app:

- Open this link on your phone using Safari or Google Chrome: [arcg.is/08S1GS](http://arcg.is/08S1GS)  
OR, Scan the QR code using a QR app (e.g., press and hold Chrome)
  - You may have to open the link outside of your QR app (e.g., Safari)
- Click 'Open in the Survey123 field app'. Ignore the 'Sign in to ArcGIS online' message if it appears. Allow Survey123 to access your location and camera
- \*NOTE:** RIVERS is periodically updated and may need to be re-downloaded. Do



Scan QR code to download RIVERS

so by 'deleting' the RIVERS survey from your Survey123 app, and download it again per a. above

### Opening RIVERS within the Survey123 app:

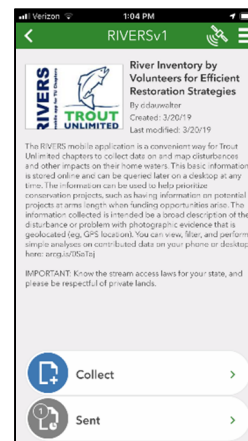
**Step 1:** Open the Survey123 app (if not already open)



**Step 2:** Select the RIVERS (RIVERSv1) survey from My Surveys

**Step 3:** Tap the Collect icon at the bottom of your screen to begin collecting data

Tap **Collect** at bottom to start a survey.



**RIVERS is a mobile application to help Trout Unlimited chapters develop a database of disturbances on their home rivers. Start a survey, enter your information, mark a location, and define a disturbance using your mobile phone. It's that easy.** (updated: 3/28/2019)

# RIVERS: Get Started

## Begin a RIVERS survey:

A new survey is used to collect data on each individual disturbance

### Step 1: Complete TU Chapter and contact information for the survey

- Fill out state, TU chapter, participant name, email address, and phone number
- \*Note:** Save this information as 'Favorites' using upper right menu so that you can simply paste in this information for every new survey

### Step 2: Complete other survey information for the survey

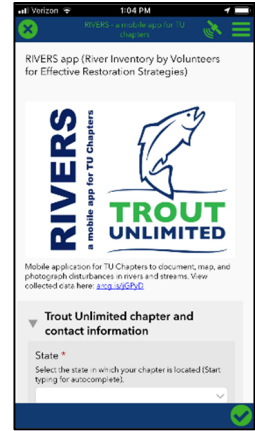
- Fill out waterbody name and type, and date/time

### Step 3: Complete disturbance information for the survey

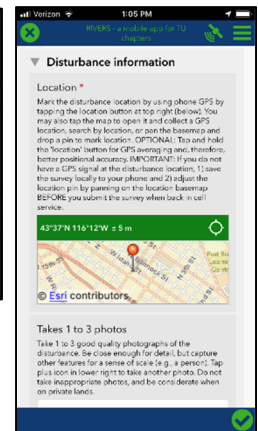
- Mark the location by tapping on the marker location at top right
  - You must tap the marker location to update your GPS location
  - You can tap the map to open it and move your location pin or tap the marker location button within the map to update location. Tap the check mark to capture the updated location
- Take 1-3 high quality photos of the disturbance. Use a person for scale if possible
  - See the *RIVERS: Photos* document for more information
- Select the general disturbance type
  - You have to select a general disturbance to see options for specific disturbances
  - \*Tip:** tap the thumbnail to enlarge photos
  - See the *RIVERS: Disturbances* document for more information on disturbance types
- Select the specific disturbance type, which is available after you select a general disturbance type
- \*Optional:** Collect water temperature data, and enter it into the form



*Document a sediment plume using RIVERS*



*Start a Survey using RIVERS*



*Mark each disturbance location in RIVERS*

### Step 3: Enter survey notes

- Enter notes for each survey or disturbance to give context to collected data

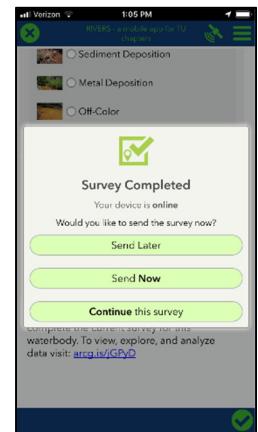
### Step 4: Complete survey by tapping the check mark at bottom right

- If you have cellular service, tap Send **Now** when prompted.
- If you do not have service, it will be stored in our Outbox and can be sent at a later time when you have service

*Surveys will be stored in your Outbox until you have cell service*

## View Disturbance Data:

- View data on a phone or desktop computer: [arcg.is/1OWXev](http://arcg.is/1OWXev)
- See the *RIVERS: View Data* document for more information



**RIVERS is a mobile application to help Trout Unlimited chapters develop a database of disturbances on their home rivers. Start a survey, enter your information, mark a location, and define a disturbance using your mobile phone. It's that easy.** (updated: 3/28/2019)