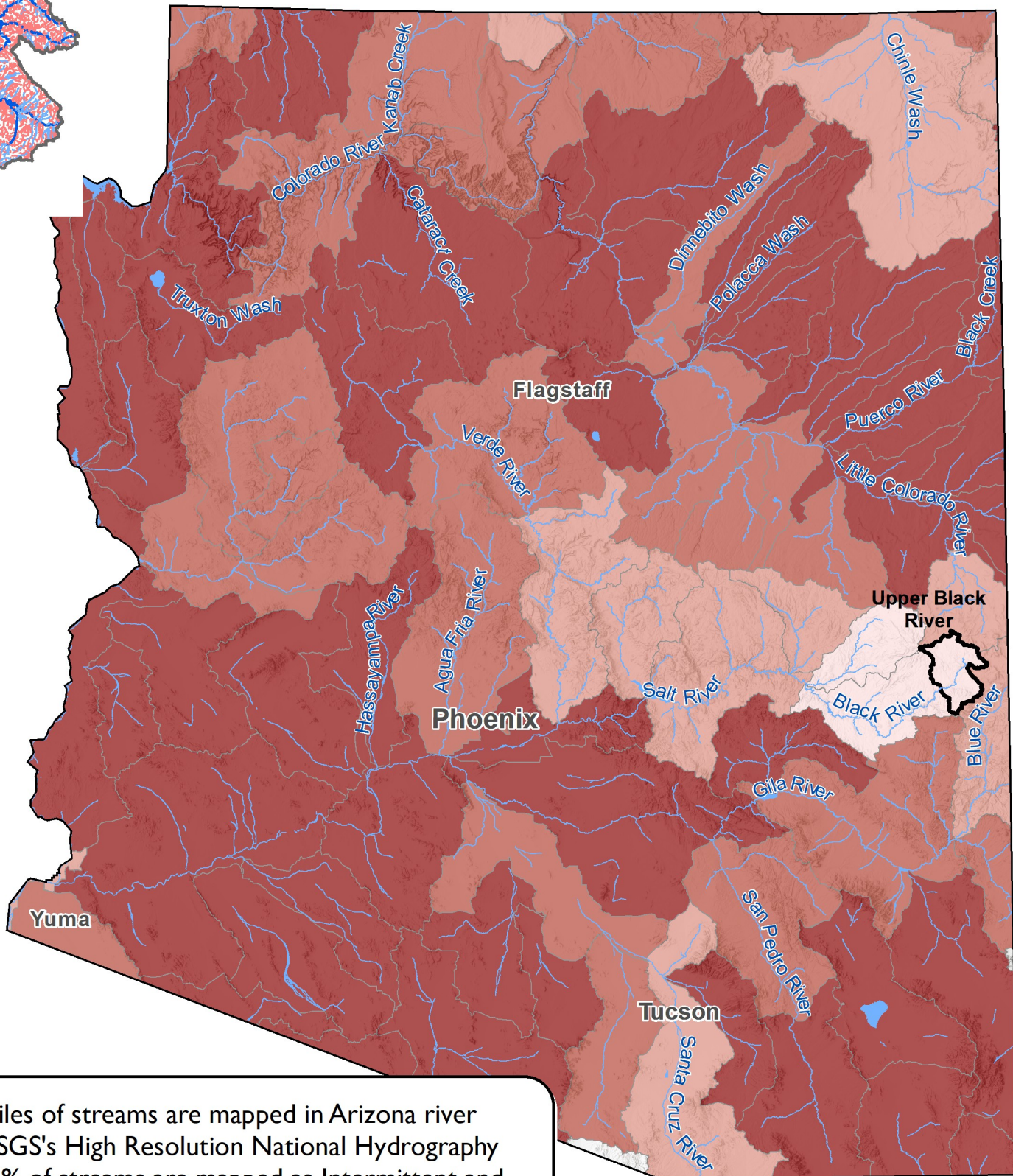


 Perennial - NHDHigh 
  Intermittent - NHDHigh 
  Ephemeral - NHDHigh

Upper Black River

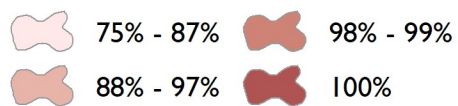


**432,728** miles of streams are mapped in Arizona river basins in USGS's High Resolution National Hydrography Dataset. **24%** of streams are mapped as Intermittent and **74%** as Ephemeral.

Even where ephemeral streams are mapped in the NHD, many ephemeral stream channels visible on the ground are missing in the dataset. TU estimates an additional **0.6 miles of unmapped ephemeral streams exist for every mile of mapped stream in Arizona.**

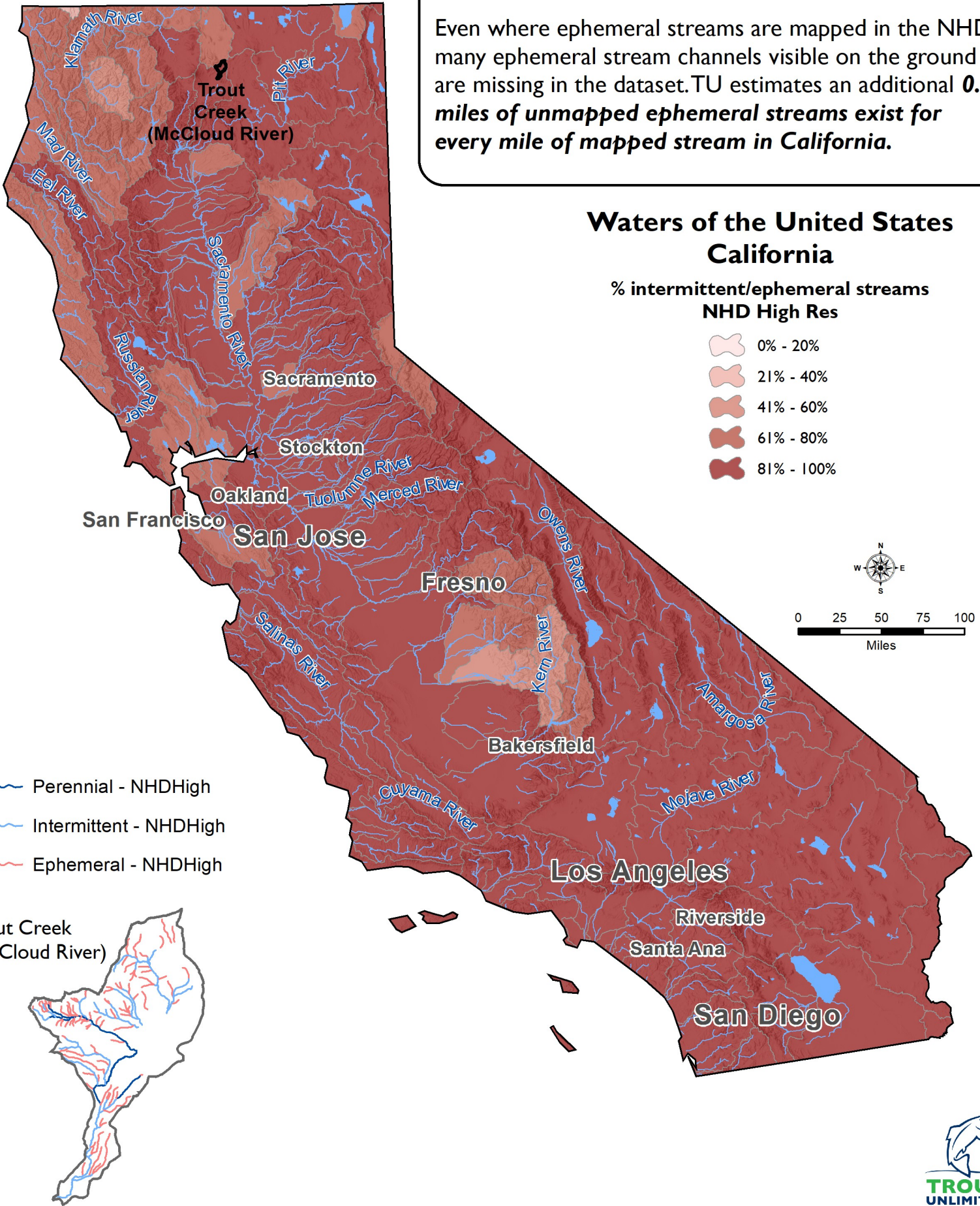
### Waters of the United States Arizona

% intermittent/ephemeral streams  
NHD High Res



**519,545** miles of streams are mapped in California river basins in USGS's High Resolution National Hydrography Dataset. **22%** of streams are mapped as Intermittent and **67%** as Ephemeral.

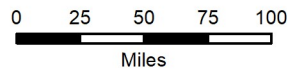
Even where ephemeral streams are mapped in the NHD, many ephemeral stream channels visible on the ground are missing in the dataset. TU estimates an additional **0.7 miles of unmapped ephemeral streams exist for every mile of mapped stream in California.**



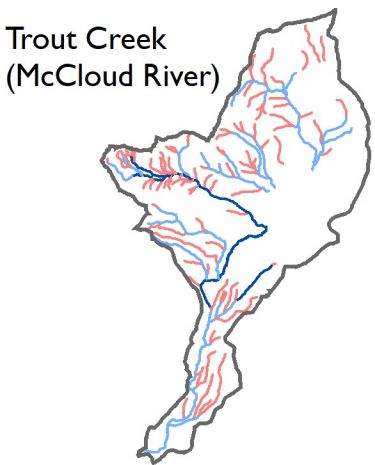
### Waters of the United States California

% intermittent/ephemeral streams  
NHD High Res

- 0% - 20%
- 21% - 40%
- 41% - 60%
- 61% - 80%
- 81% - 100%

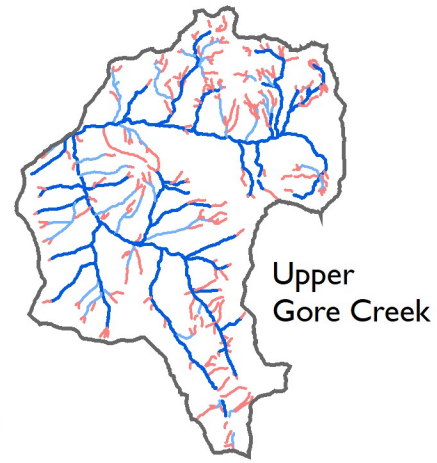


- Perennial - NHDHigh
- Intermittent - NHDHigh
- Ephemeral - NHDHigh



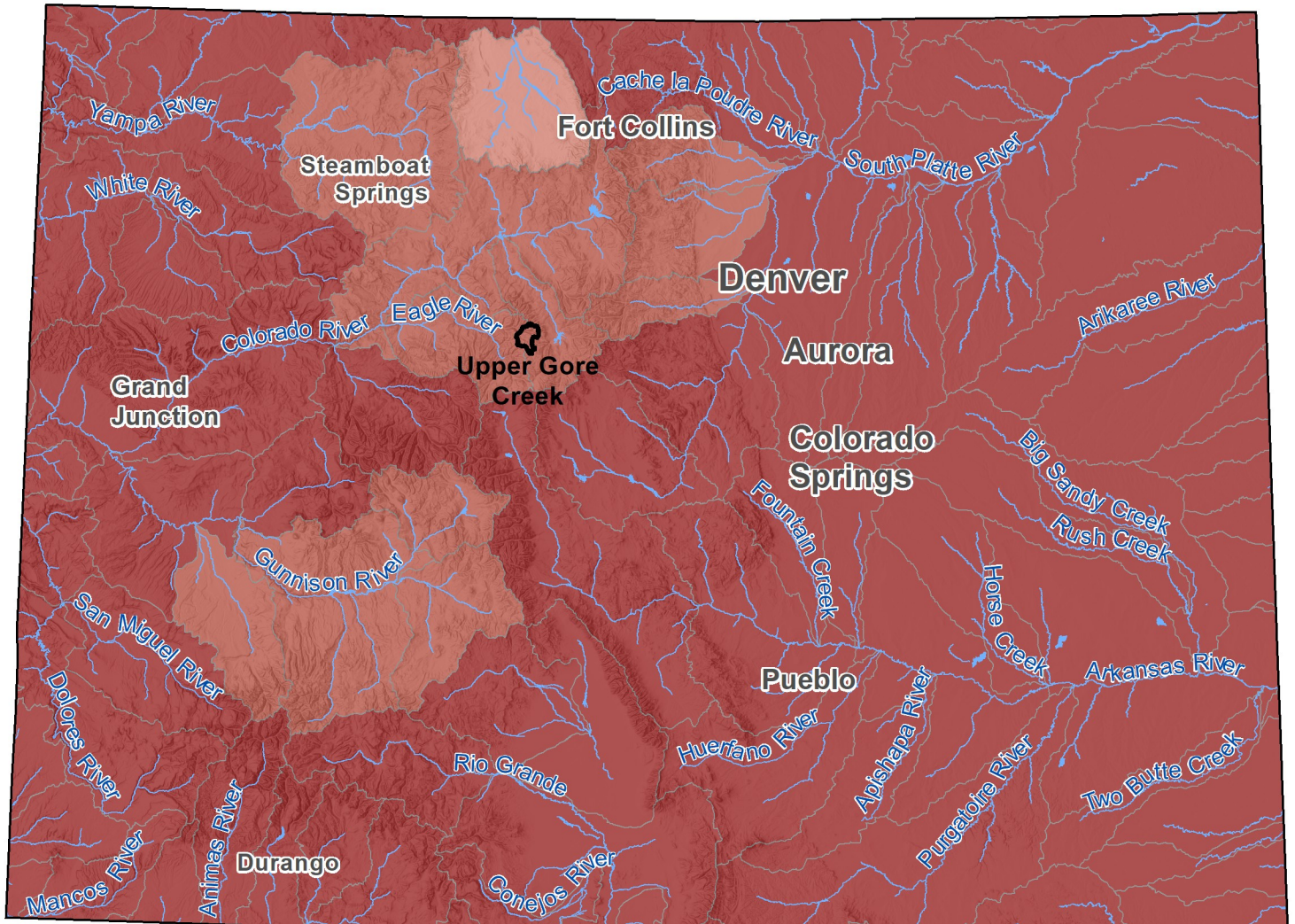
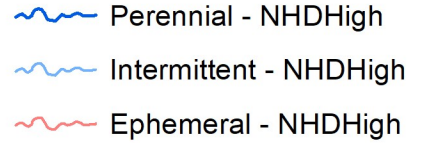
**353,607** miles of streams are mapped in Colorado river basins in USGS's High Resolution National Hydrography Dataset. **63%** of streams are mapped as Intermittent and **25%** as Ephemeral.

Even where ephemeral streams are mapped in the NHD, many ephemeral stream channels visible on the ground are missing in the dataset. TU estimates an additional **0.8 miles of unmapped ephemeral streams exist for every mile of mapped stream in Colorado.**






## Waters of the United States Colorado

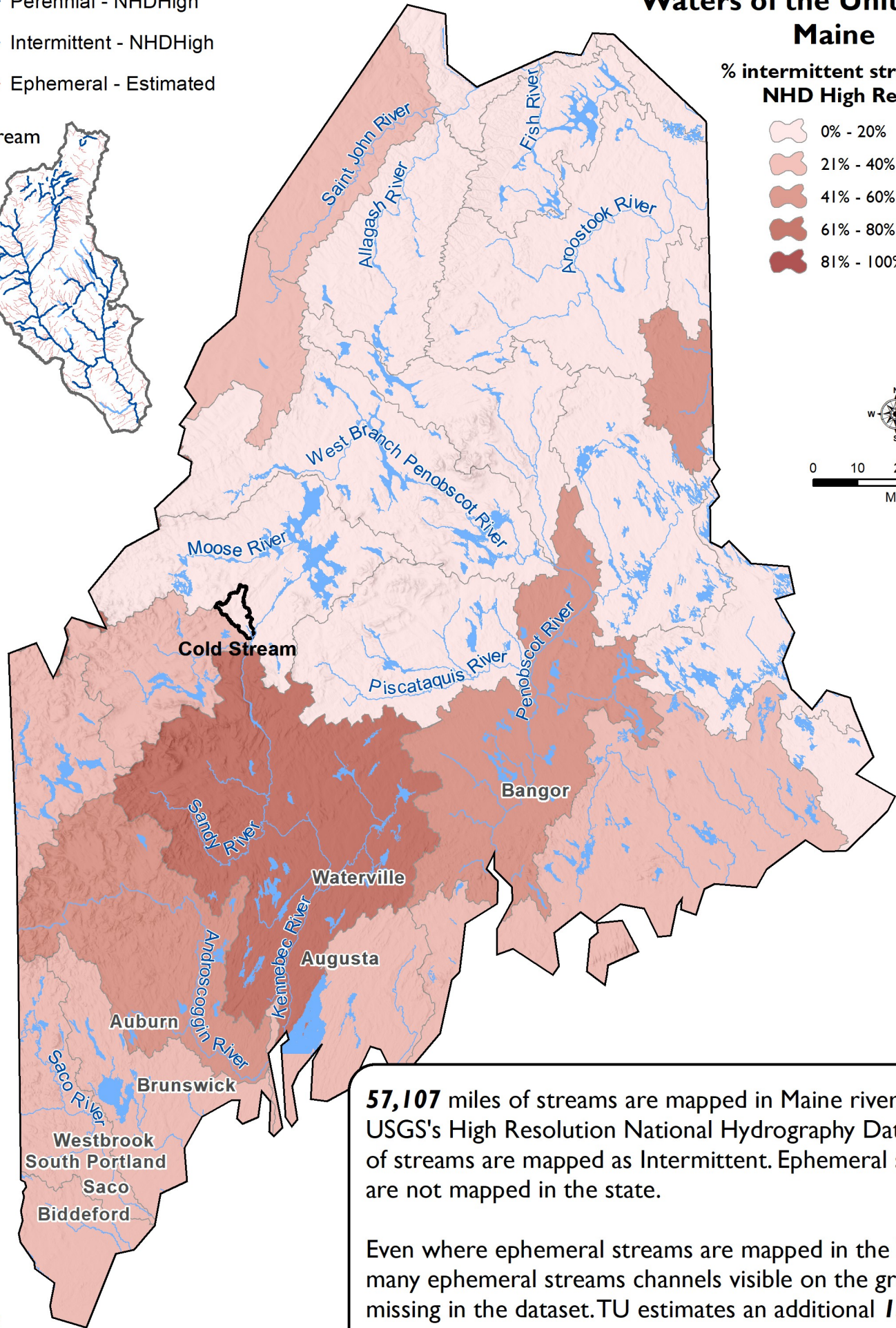
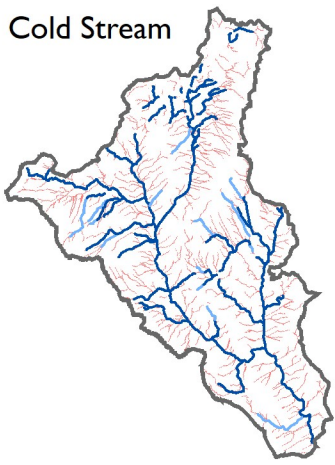
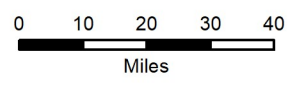
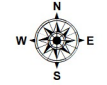
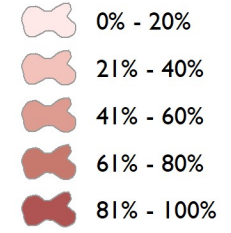
% intermittent/ephemeral streams  
NHD High Res



# Waters of the United States Maine

-  Perennial - NHDHigh
-  Intermittent - NHDHigh
-  Ephemeral - Estimated

## % intermittent streams NHD High Res



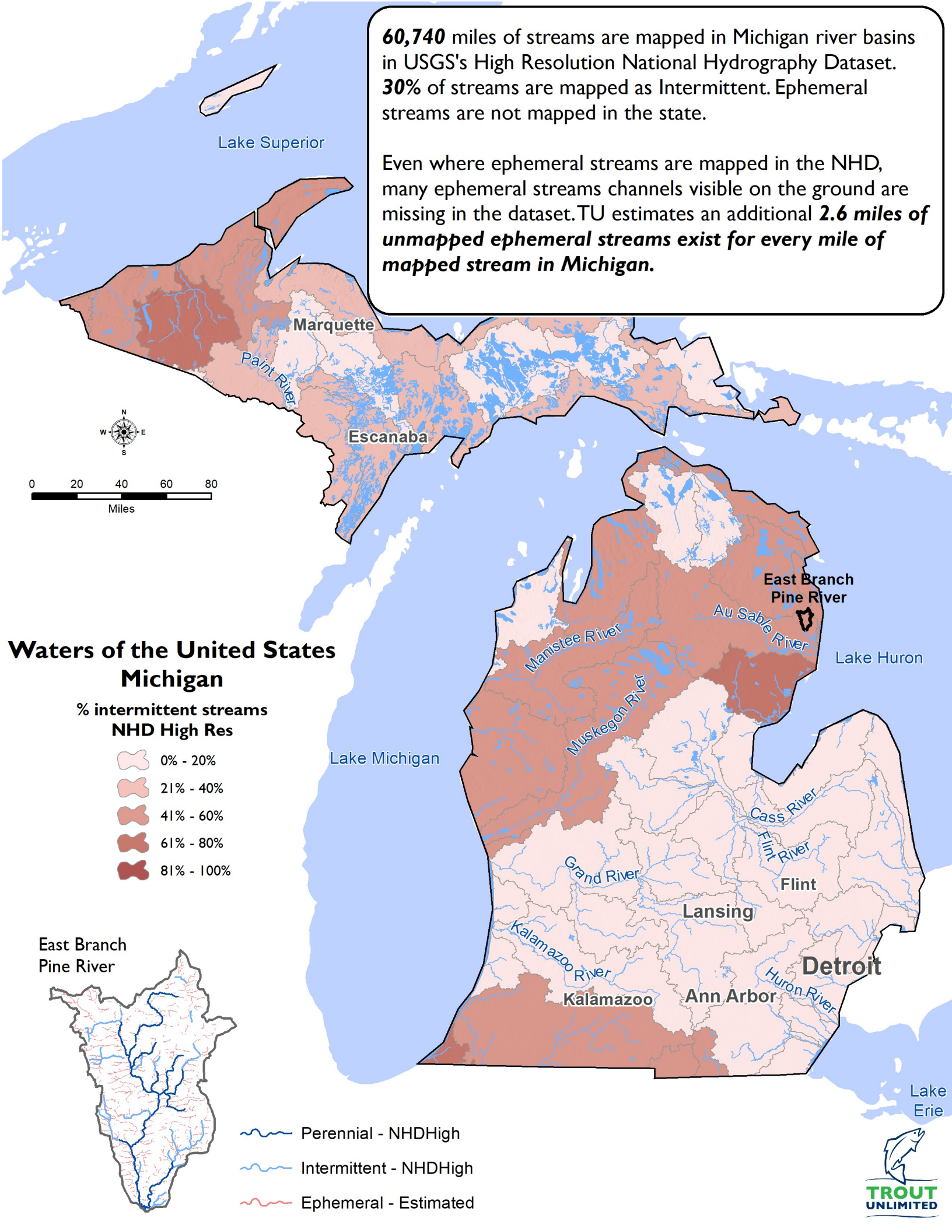
**57,107** miles of streams are mapped in Maine river basins in USGS's High Resolution National Hydrography Dataset. **34%** of streams are mapped as Intermittent. Ephemeral streams are not mapped in the state.

Even where ephemeral streams are mapped in the NHD, many ephemeral streams channels visible on the ground are missing in the dataset. TU estimates an additional **1.6 miles of unmapped ephemeral streams exist for every mile of mapped stream in Maine.**



**60,740** miles of streams are mapped in Michigan river basins in USGS's High Resolution National Hydrography Dataset. **30%** of streams are mapped as Intermittent. Ephemeral streams are not mapped in the state.

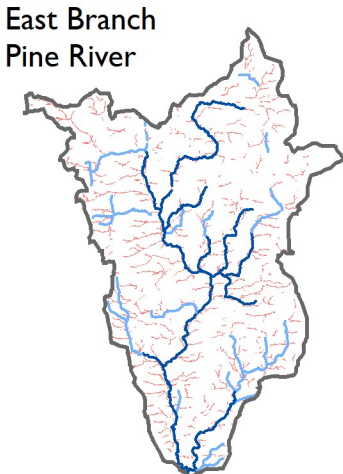
Even where ephemeral streams are mapped in the NHD, many ephemeral streams channels visible on the ground are missing in the dataset. TU estimates an additional **2.6 miles of unmapped ephemeral streams exist for every mile of mapped stream in Michigan.**



## Waters of the United States Michigan

% intermittent streams  
NHD High Res

- 0% - 20%
- 21% - 40%
- 41% - 60%
- 61% - 80%
- 81% - 100%



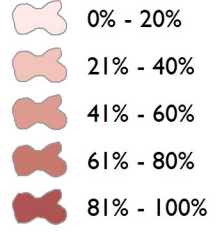
- Perennial - NHDHigh
- Intermittent - NHDHigh
- Ephemeral - Estimated



# Waters of the United States

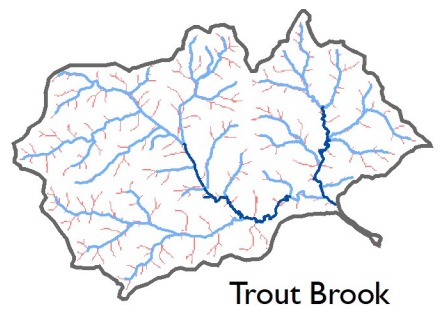
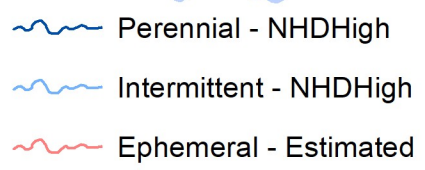
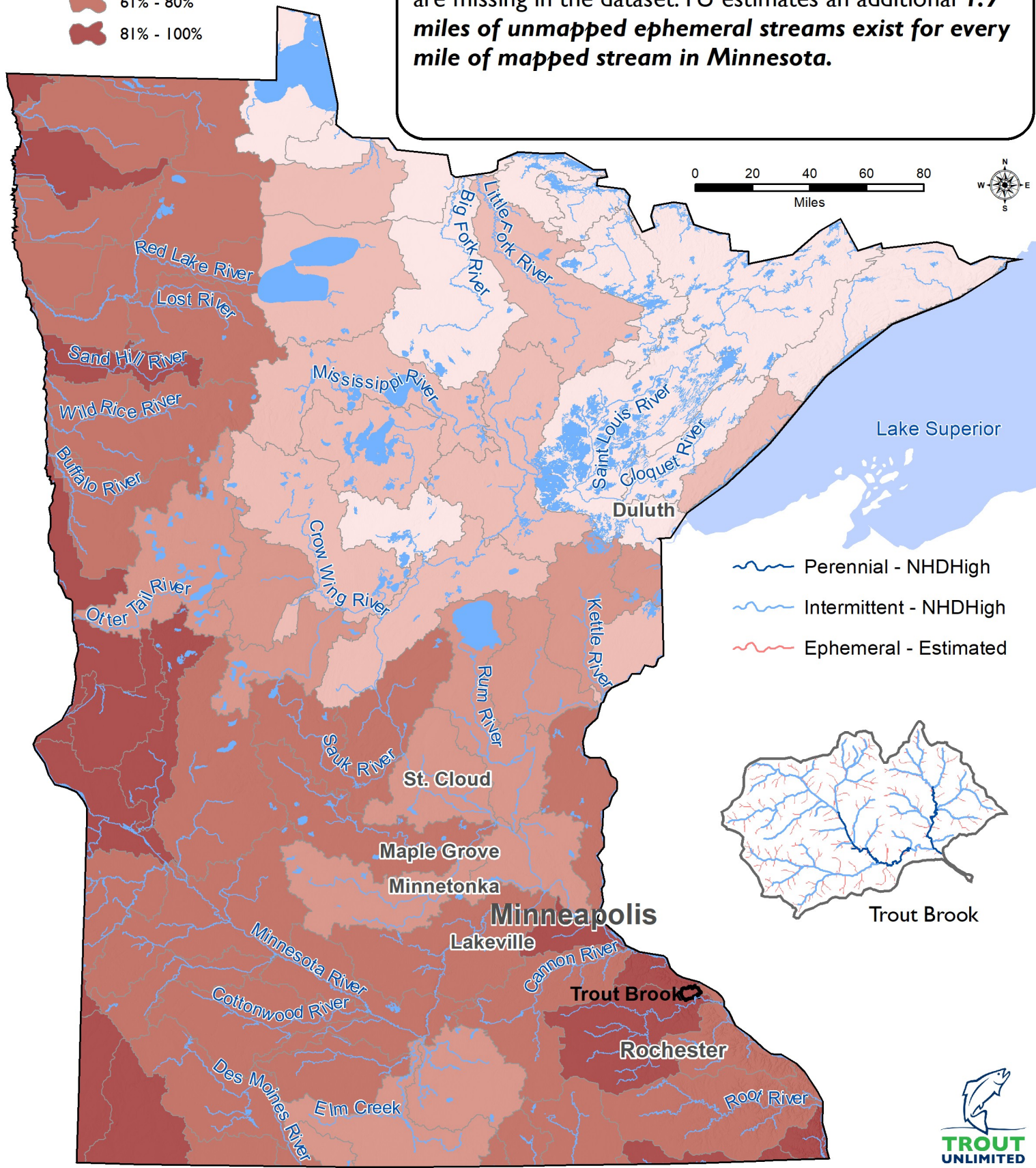
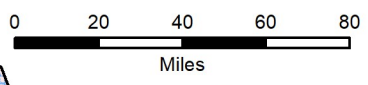
## Minnesota




% intermittent streams  
NHD High Res



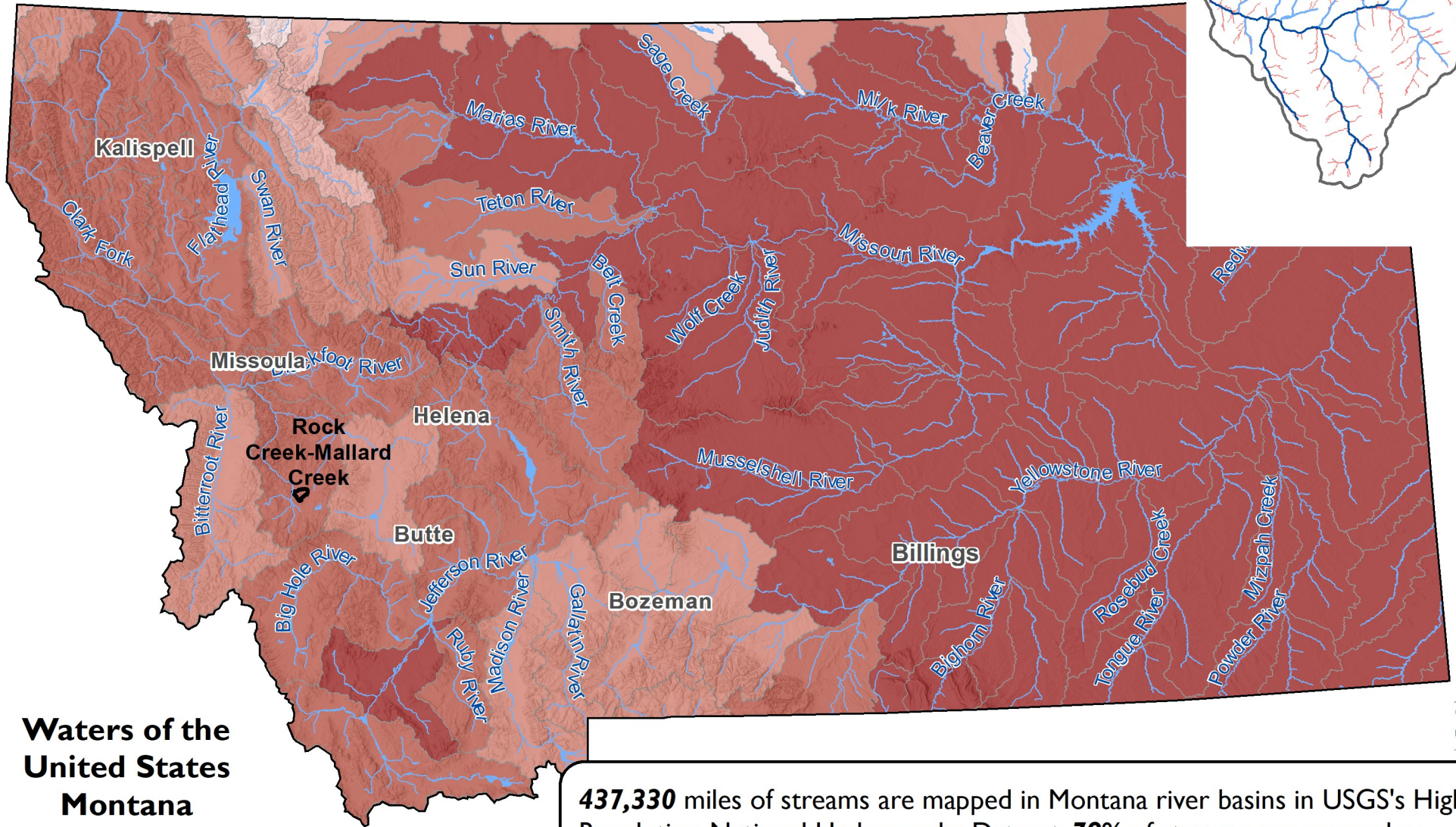
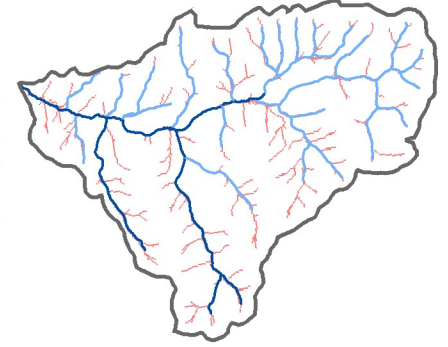
**106,420** miles of streams are mapped in Minnesota river basins in USGS's High Resolution National Hydrography Dataset. **58%** of streams are mapped as Intermittent. Ephemeral streams are not mapped in the state.

Even where ephemeral streams are mapped in the NHD, many ephemeral streams channels visible on the ground are missing in the dataset. TU estimates an additional **1.9 miles of unmapped ephemeral streams exist for every mile of mapped stream in Minnesota.**



-  Perennial - NHDHigh
-  Intermittent - NHDHigh
-  Ephemeral - Estimated

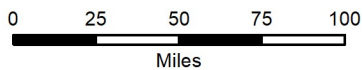
Rock Creek-Mallard Creek



## Waters of the United States Montana

% intermittent streams  
NHD High Res

-  0% - 20%
-  21% - 40%
-  41% - 60%
-  61% - 80%
-  81% - 100%



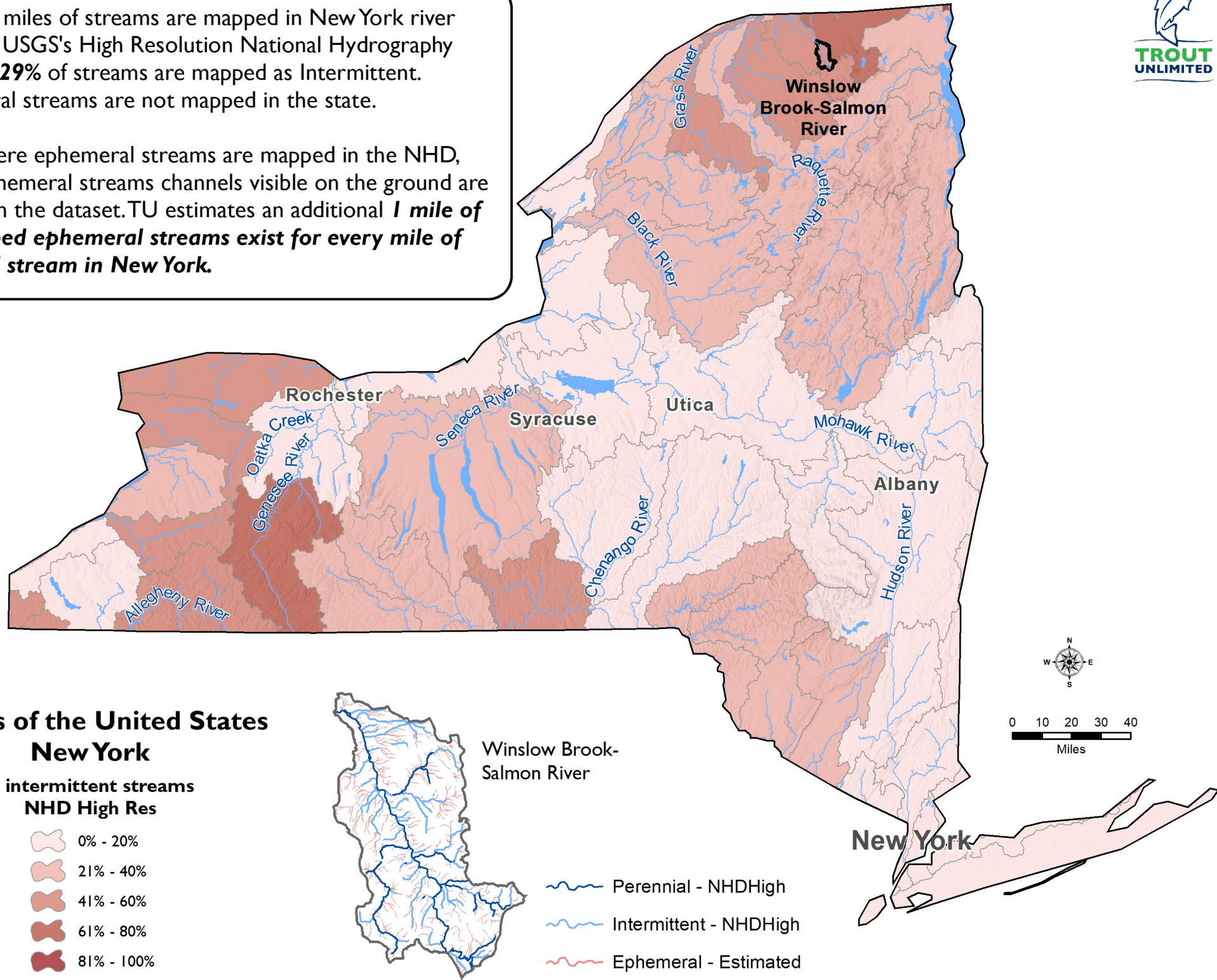
**437,330** miles of streams are mapped in Montana river basins in USGS's High Resolution National Hydrography Dataset. **79%** of streams are mapped as Intermittent. Ephemeral streams are not mapped in most of the state.

Even where ephemeral streams are mapped in the NHD, many ephemeral streams channels visible on the ground are missing in the dataset. TU estimates an additional **0.6 miles of unmapped ephemeral streams exist for every mile of mapped stream in Montana.**




**109,898** miles of streams are mapped in New York river basins in USGS's High Resolution National Hydrography Dataset. **29%** of streams are mapped as Intermittent. Ephemeral streams are not mapped in the state.

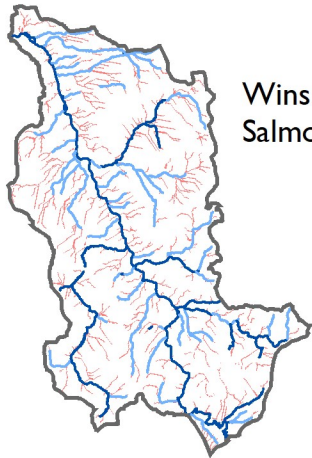
Even where ephemeral streams are mapped in the NHD, many ephemeral streams channels visible on the ground are missing in the dataset. TU estimates an additional **1 mile of unmapped ephemeral streams exist for every mile of mapped stream in New York.**






### Waters of the United States New York

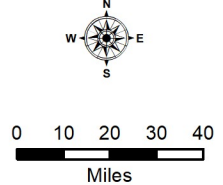
% intermittent streams  
NHD High Res

-  0% - 20%
-  21% - 40%
-  41% - 60%
-  61% - 80%
-  81% - 100%



Winslow Brook-Salmon River

-  Perennial - NHDHigh
-  Intermittent - NHDHigh
-  Ephemeral - Estimated



New York

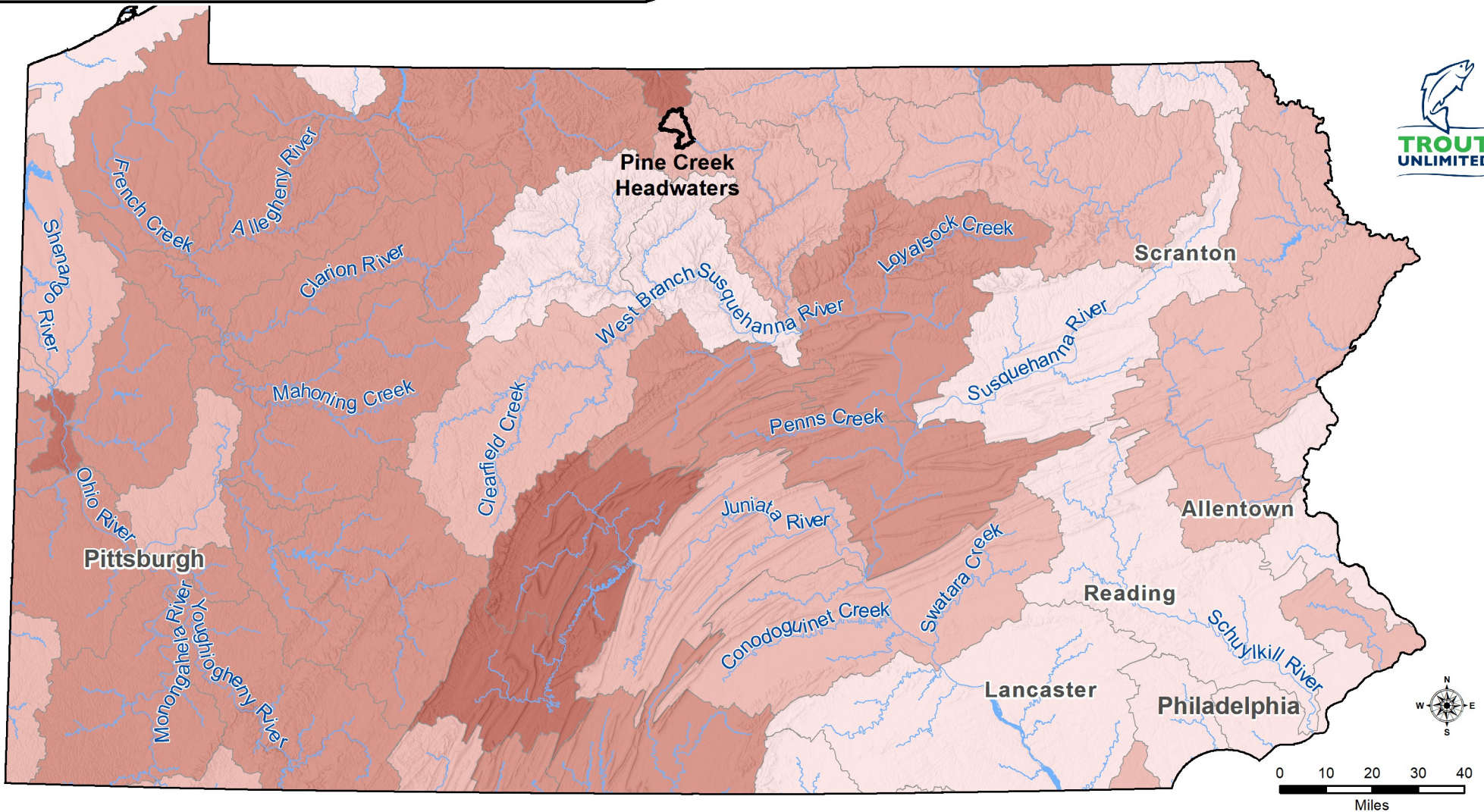
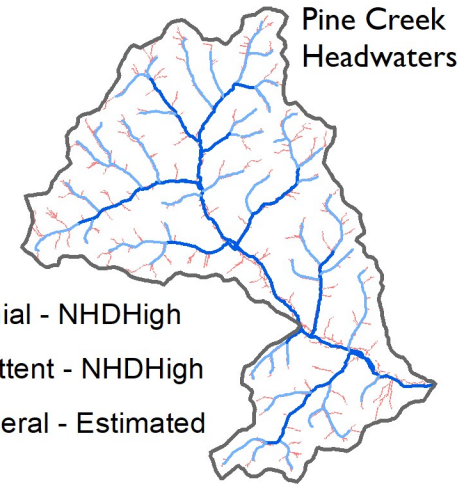
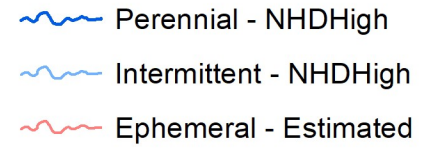
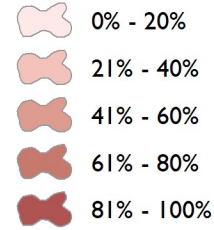


**95,050** miles of streams are mapped in Pennsylvania river basins in USGS's High Resolution National Hydrography Dataset. **38%** of streams are mapped as Intermittent. Ephemeral streams are not mapped in the state.

Even where ephemeral streams are mapped in the NHD, many ephemeral streams channels visible on the ground are missing in the dataset. TU estimates an additional **1 mile of unmapped ephemeral streams exist for every mile of mapped stream in Pennsylvania.**




## Waters of the United States Pennsylvania

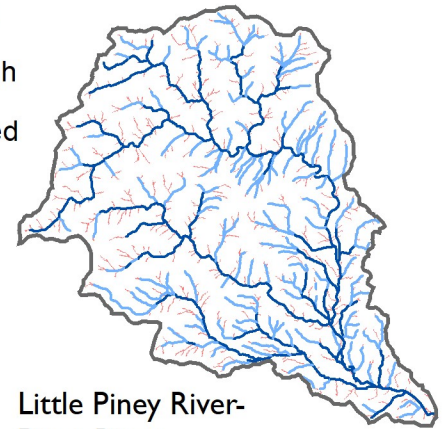
% intermittent streams  
NHD High Res



**119,317** miles of streams are mapped in Virginia river basins in USGS's High Resolution National Hydrography Dataset. **56%** of streams are mapped as Intermittent. Ephemeral streams are not mapped in the state.

Even where ephemeral streams are mapped in the NHD, many ephemeral streams channels visible on the ground are missing in the dataset. TU estimates an additional **0.6 miles of unmapped ephemeral streams exist for every mile of mapped stream in Virginia.**


-  Perennial - NHDHigh
-  Intermittent - NHDHigh
-  Ephemeral - Estimated

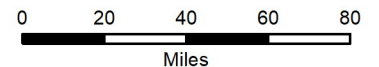
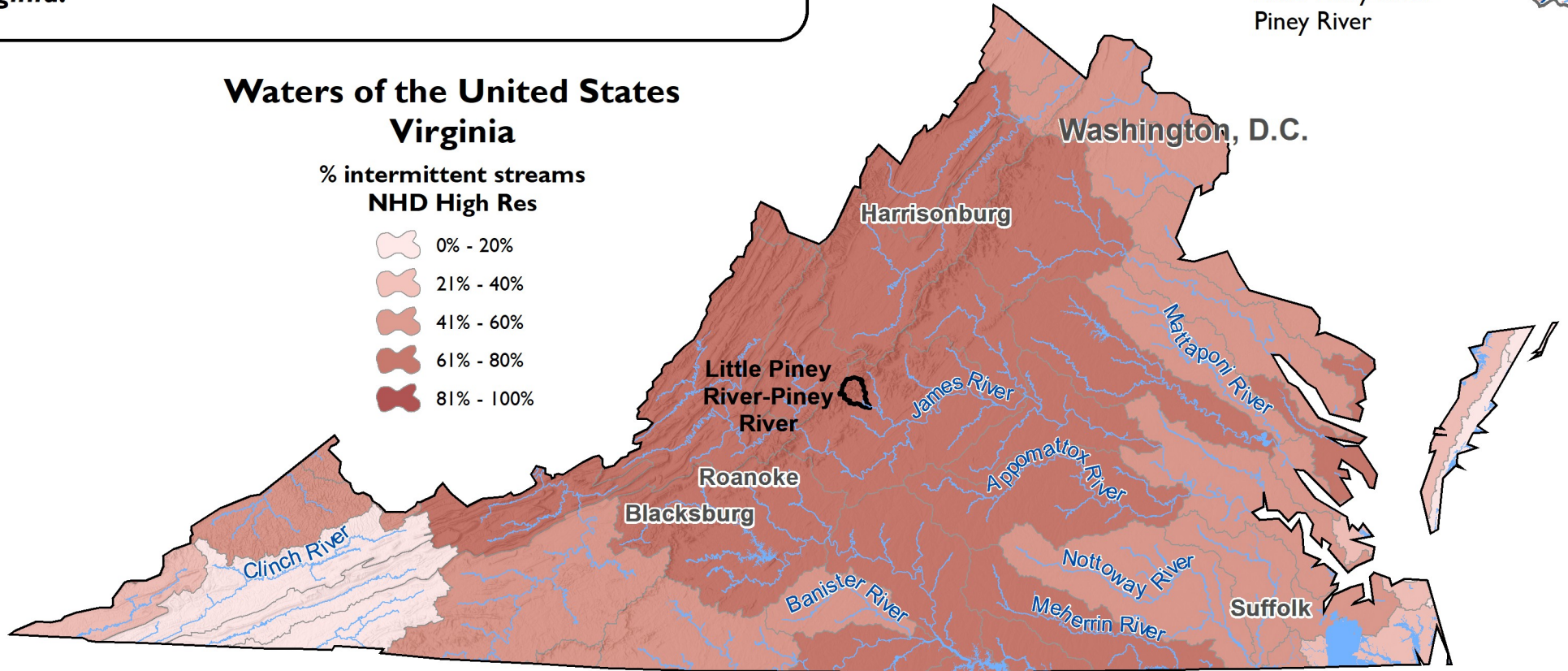


Little Piney River-Piney River

## Waters of the United States Virginia

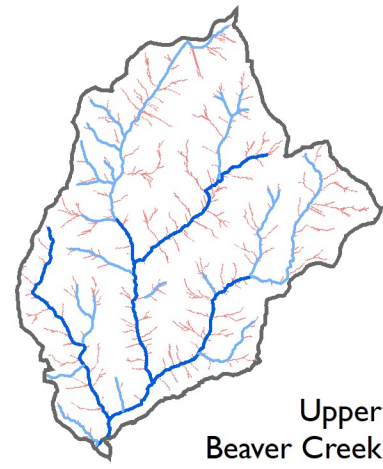
% intermittent streams  
NHD High Res

-  0% - 20%
-  21% - 40%
-  41% - 60%
-  61% - 80%
-  81% - 100%






**233,504** miles of streams are mapped in Washington river basins in USGS's High Resolution National Hydrography Dataset. **67%** of streams are mapped as Intermittent. Ephemeral streams are not mapped in most of the state.

Even where ephemeral streams are mapped in the NHD, many ephemeral streams channels visible on the ground are missing in the dataset. TU estimates an additional **0.3 miles of unmapped ephemeral streams exist for every mile of mapped stream in Washington.**



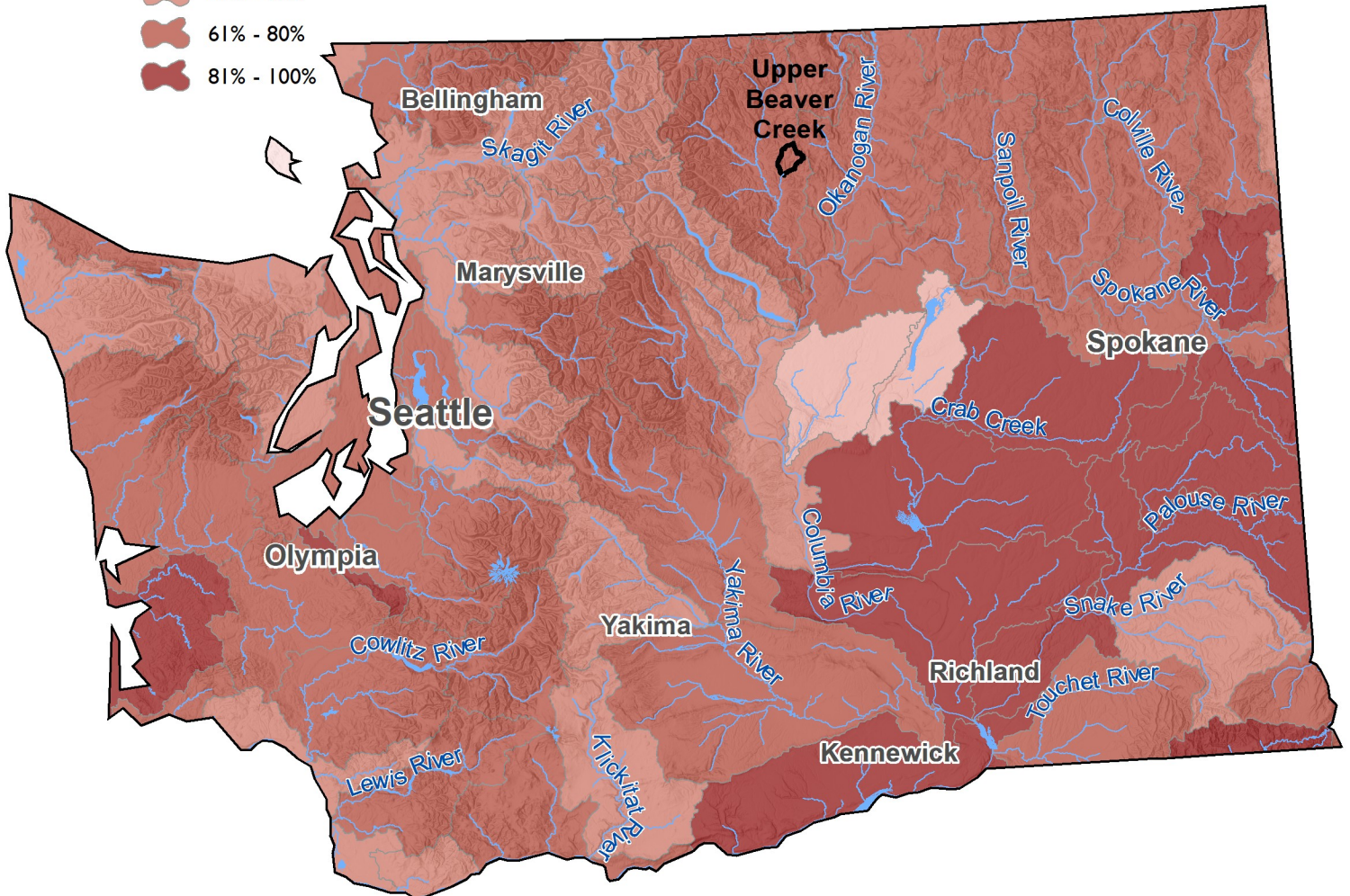
Upper Beaver Creek

-  Perennial - NHDHigh
-  Intermittent - NHDHigh
-  Ephemeral - Estimated

## Waters of the United States Washington

% intermittent streams  
NHD High Res

-  0% - 20%
-  21% - 40%
-  41% - 60%
-  61% - 80%
-  81% - 100%



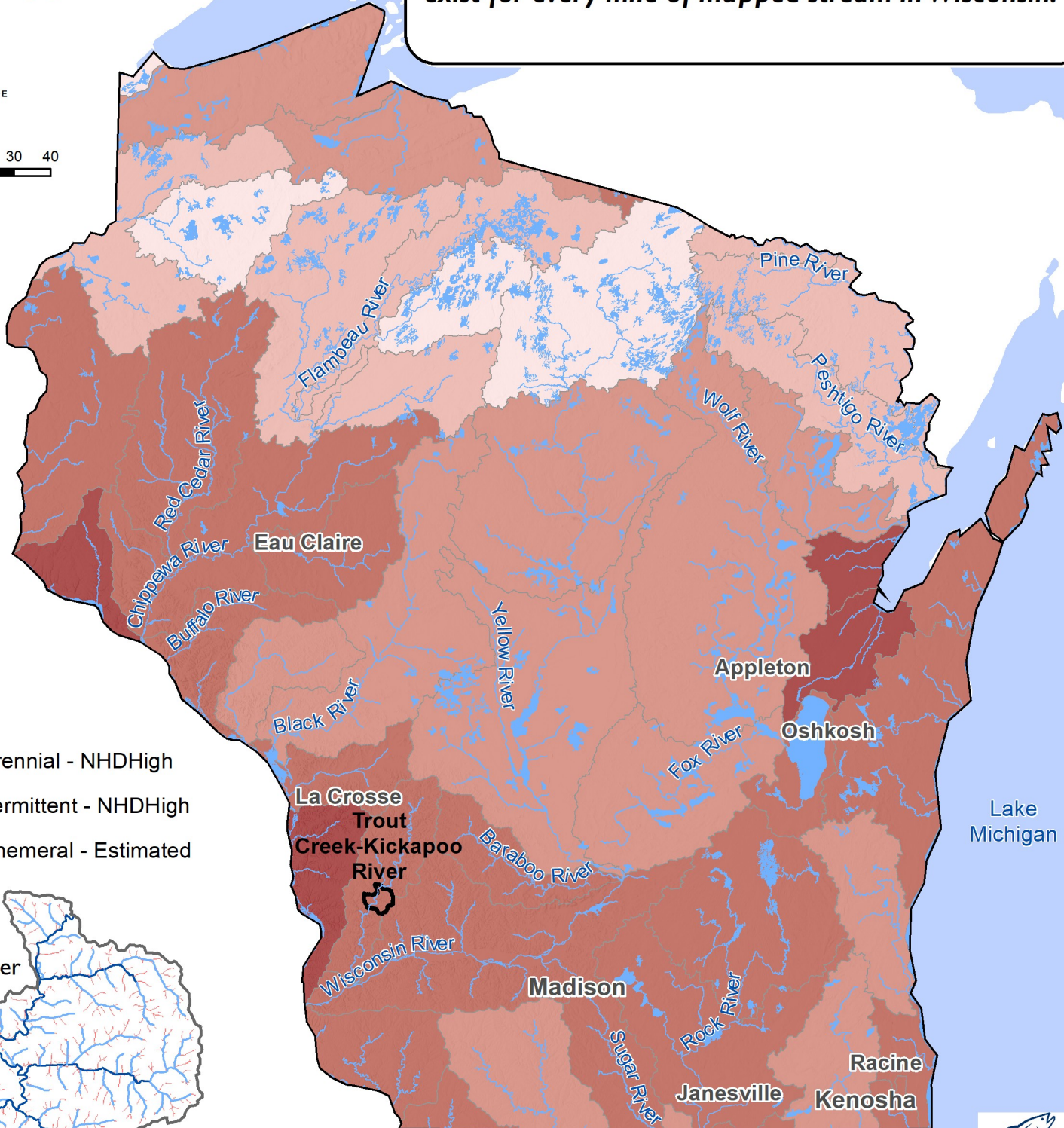
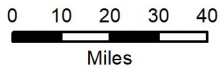
# Waters of the United States Wisconsin

% intermittent streams  
NHD High Res

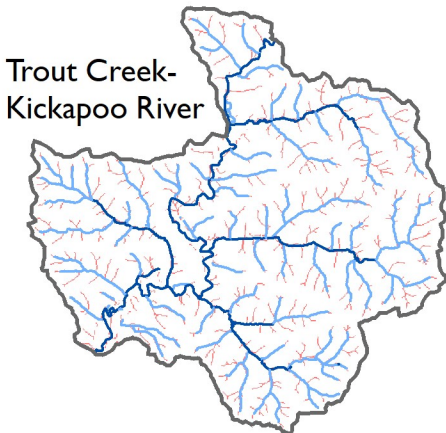


**81,571** miles of streams are mapped in Wisconsin river basins in USGS's High Resolution National Hydrography Dataset. **58%** of streams are mapped as Intermittent. Ephemeral streams are not mapped in the state.

Even where ephemeral streams are mapped in the NHD, many ephemeral streams channels visible on the ground are missing in the dataset. TU estimates an additional **1.4 miles of unmapped ephemeral streams exist for every mile of mapped stream in Wisconsin.**



- Perennial - NHDHigh
- Intermittent - NHDHigh
- Ephemeral - Estimated



Lake Michigan

