

South Carolina Trout Fishery





Brook Trout
Salvelinus fontinalis



Brown Trout
Salmo trutta



Rainbow Trout
Oncorhynchus mykiss

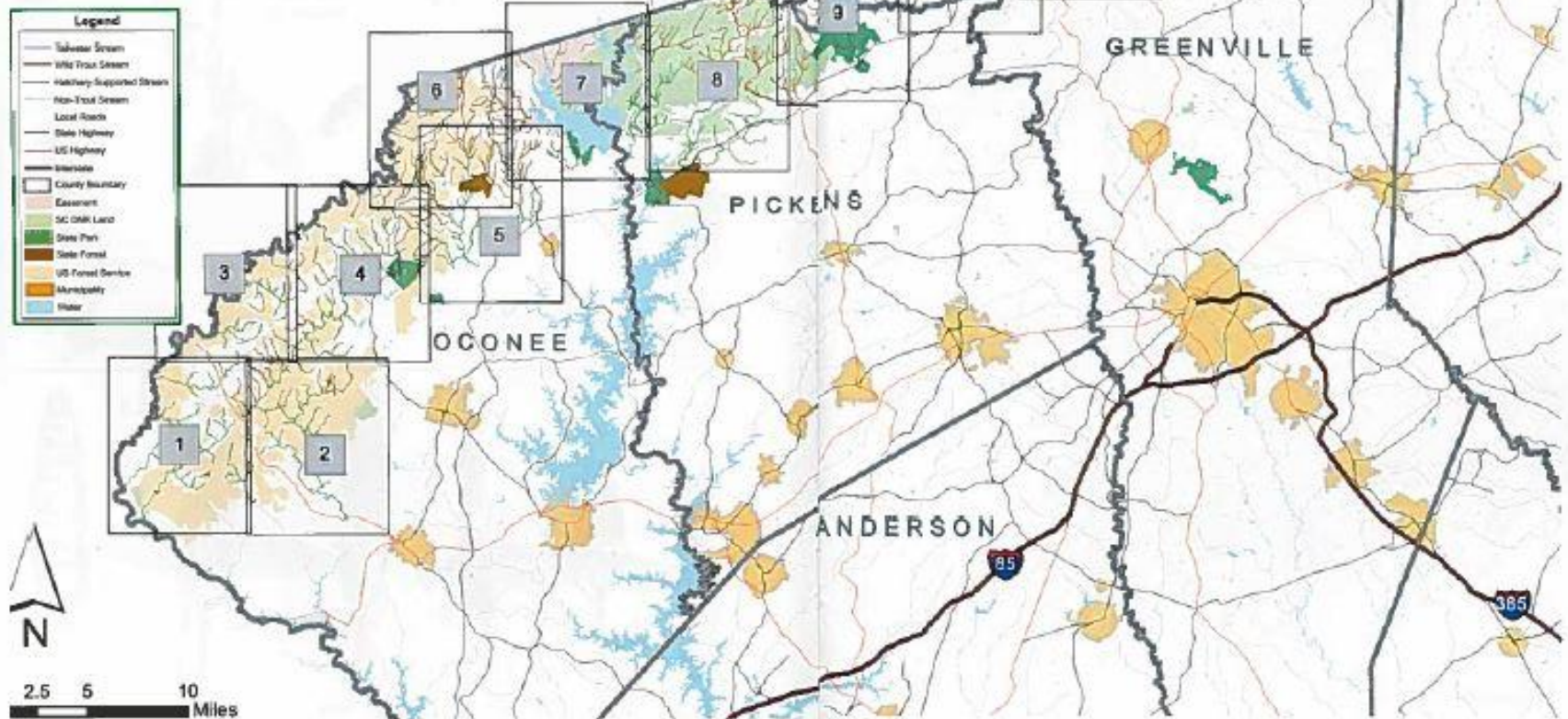
Trout Stocking Program

- Stock approximately 14 streams, 2 tailraces, Lake Jocassee, and 3 ponds.
- Delayed Harvest: Nov 1 – May 14
 - 6 streams with Delayed Harvest sections
- Put-Grow streams
- Put-Take streams
- Wild streams

HOW TO GET THERE—ACCESS AREAS

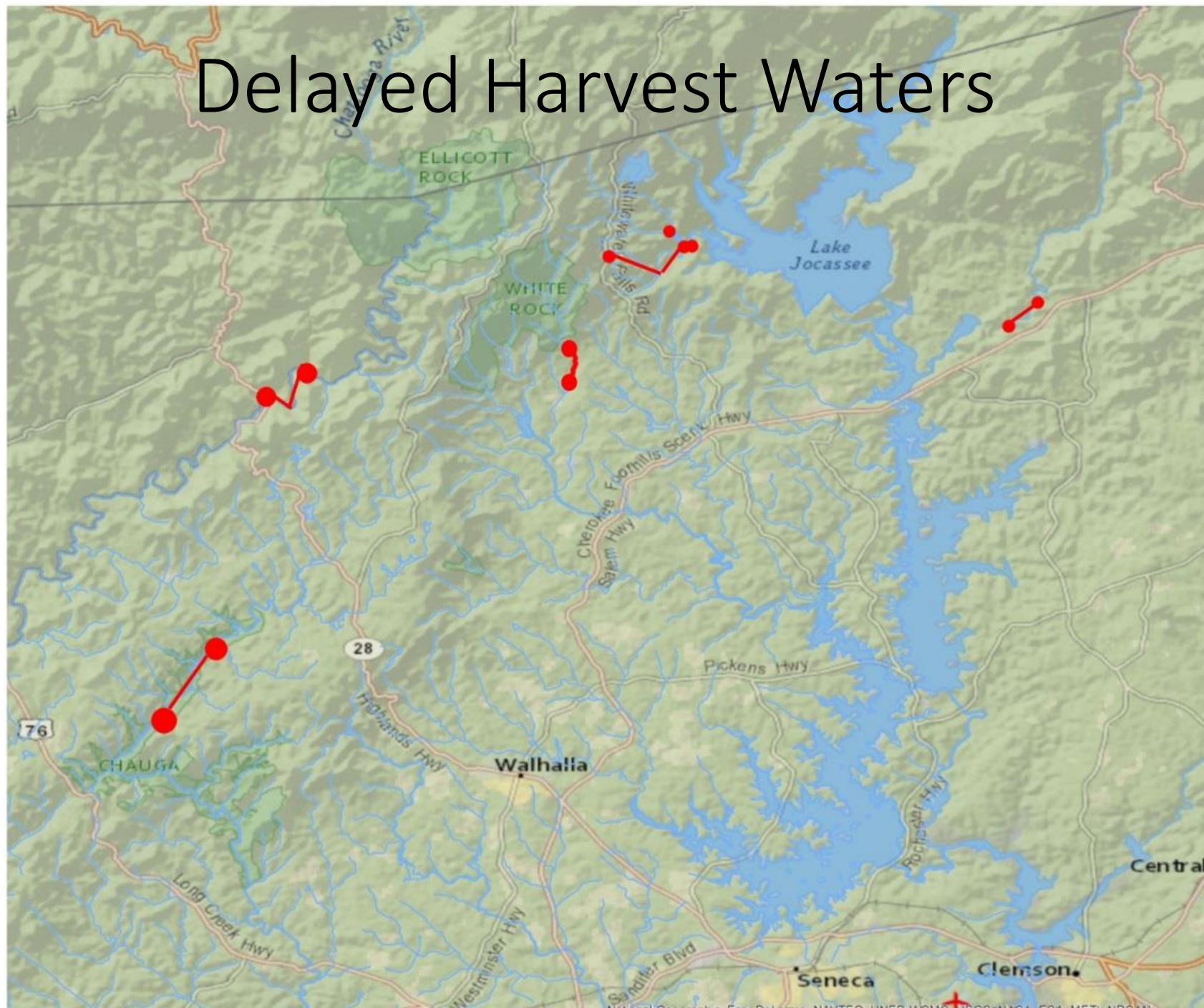
A common question of anglers is about the legality of wading trout streams bordered by private land on both sides. In South Carolina, ONLY trout streams classified as navigable can be legally waded and fished with legal ingress and egress. Wading in non-navigable streams without adjacent landowner permission constitutes trespassing. The S.C. Department of Health and Environmental Control defines state navigability of streams in South Carolina.

Trout fishing in South Carolina may be limited geographically, but many streams do lie on publicly accessible property. The following list provides brief directions to some popular publicly accessible fishing spots. The access area numbers correspond to those on the fishing maps in this brochure.



Trout Waters

Delayed Harvest Waters

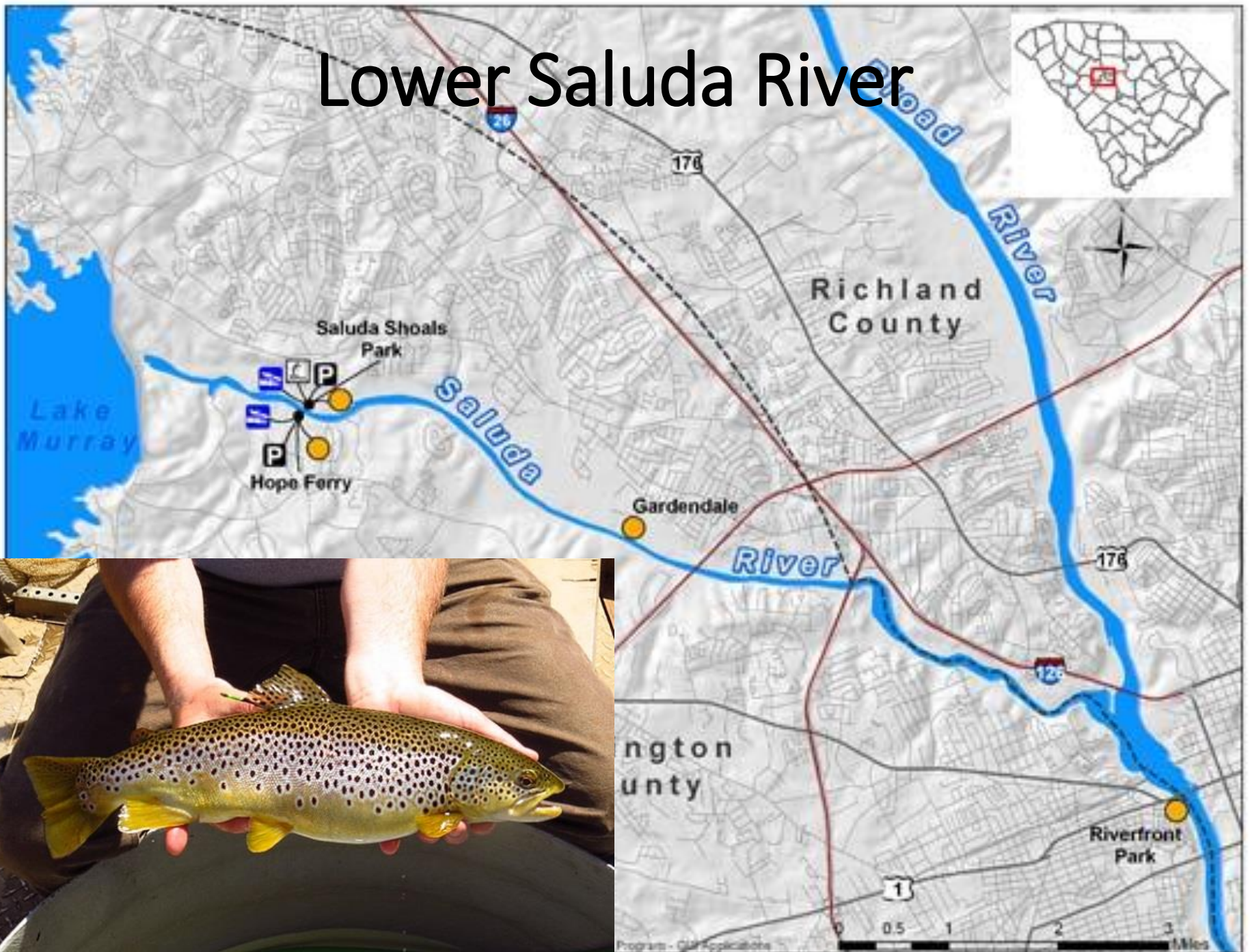




LAKE JOCASSEE



Lower Saluda River



TROUT FISHING RESOURCES



Weekly Trout Stocking Summary

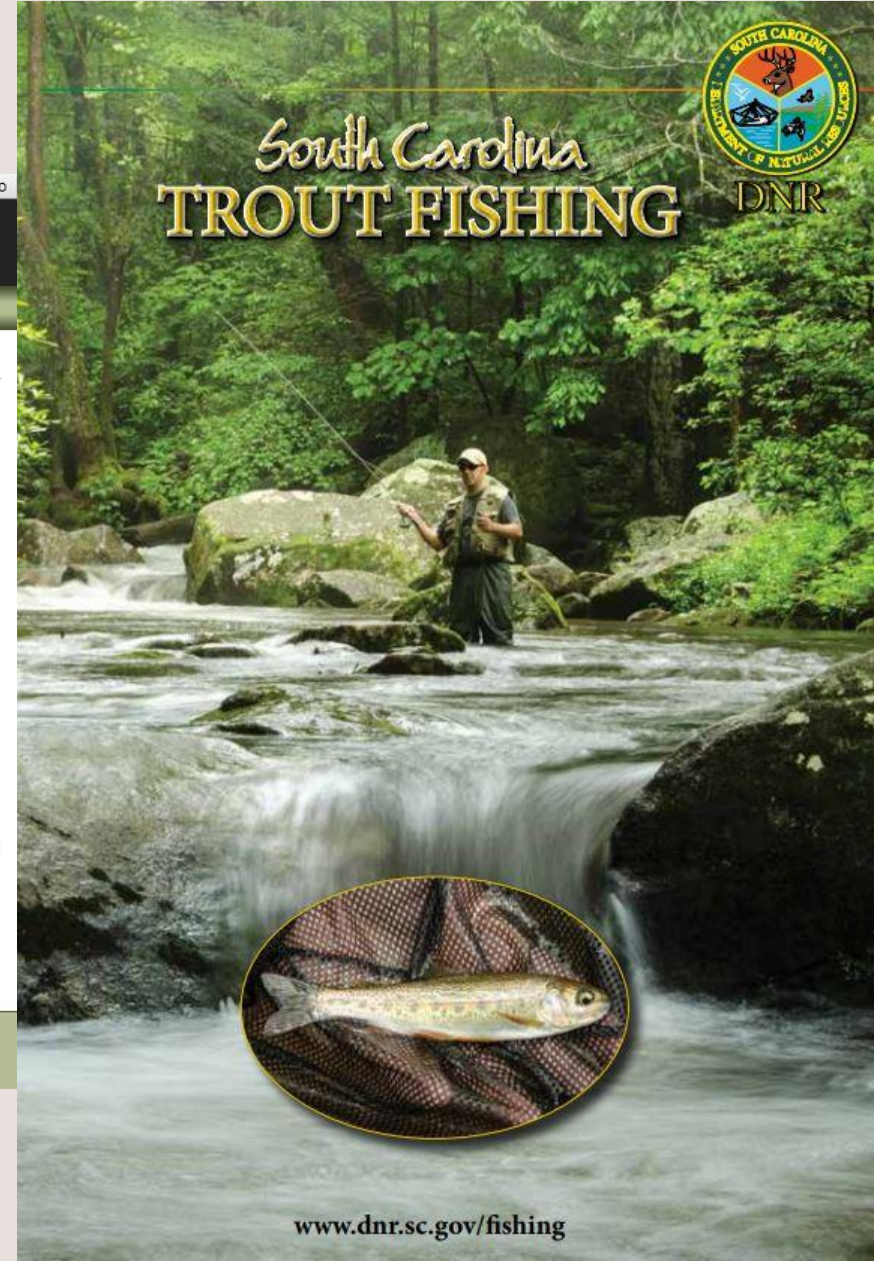
April 19, 2019 through April 25, 2019:

Day	River / Lake
Friday 4/19	
Saturday 4/20	
Sunday 4/21	
Monday 4/22	Chauga River, Chauga River (Delayed Harvest), Big Eastatoee River, Big Eastatoee River (Delayed Harvest) and Little Eastatoee River
Tuesday 4/23	Chattooga River, Chattooga River (Delayed Harvest) and Lake Hartwell (Tailrace)
Wednesday 4/24	North Saluda River, Middle Saluda River, South Saluda River, Big Eastatoee River, Big Eastatoee River (Delayed Harvest), Little Eastatoee River, Rocky Bottom Creek and Little Canebrake Creek
Thursday 4/25	

Note: A total of **11,621** trout were stocked during the time period. For questions regarding the trout stocking program, please call Dan Rankin at 864-654-6346. For information on trout stocking in the lower Saluda River (Lake Murray Tailwater) please contact Ronald C. Ahle 803-755-9345.

The [South Carolina Trout Fishing Guide](#) (Adobe PDF 19MB) is provided in Adobe® Acrobat® (PDF) format. Adobe® Reader® is required to open these files and is available as a [free download](#) from the Adobe® Web site.

[Phone Numbers](#) | [Accessibility](#) | [FOIA](#) | [Privacy Policy](#)
South Carolina Department of Natural Resources - Rembert C. Dennis Building
1000 Assembly Street, Columbia, SC 29201
© 2015 All rights reserved. webmaster@dnr.sc.gov



Trout Stream Monitoring

- Population (look at abundance and biomass)
- Temperature Profiles
- Fish Health (no whirling disease or gill lice found)
- Water Quality
- Habitat Assessment (most wild trout streams)

Lake Jocassee Monitoring

- Experimental Gill Nets
- Ploidy samples

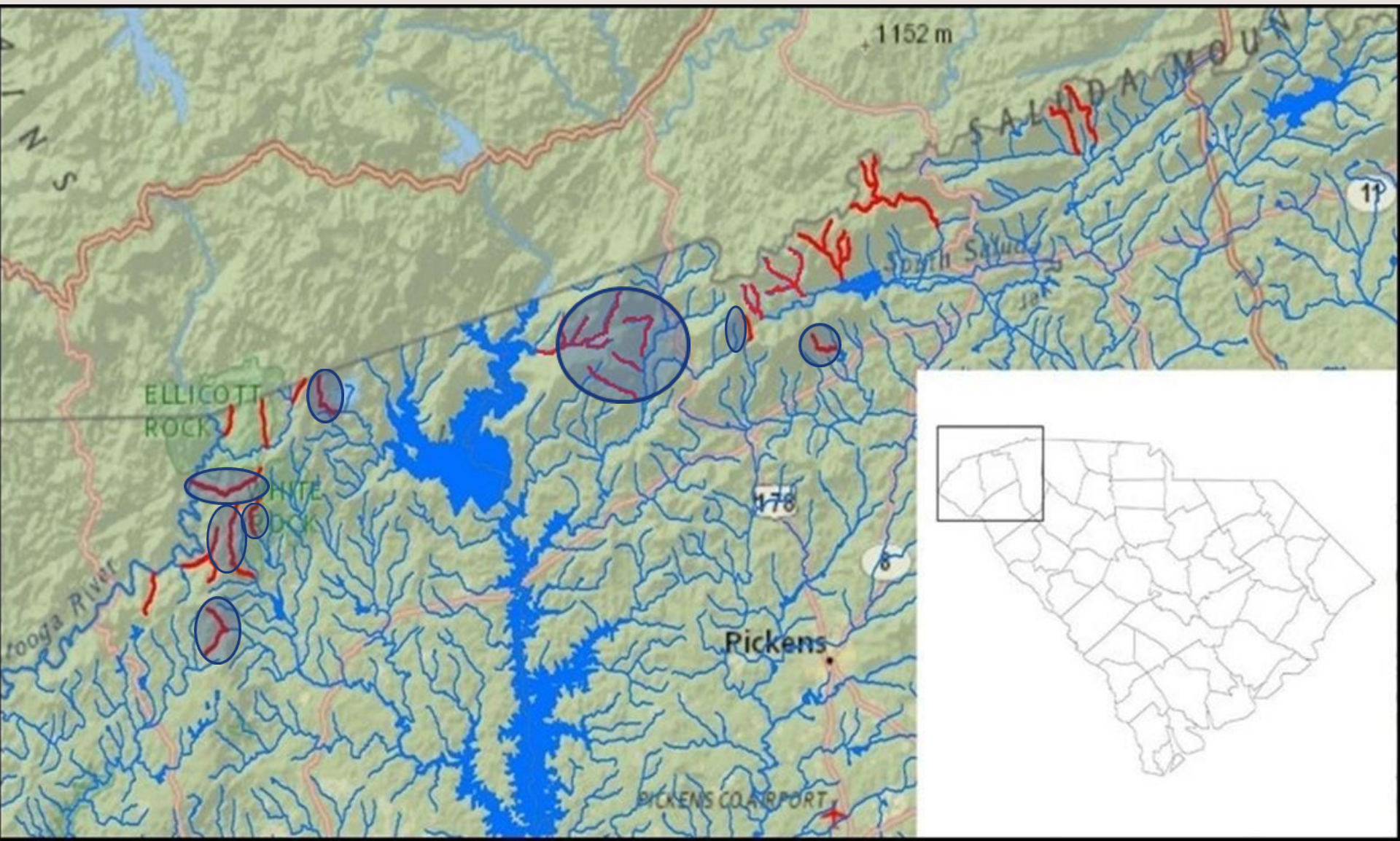
Brook Trout Monitoring & Restoration



Brook Trout Stream Restorations

Date	Stream	Miles Restored	Stream	Miles
2005-2009	King Creek	3.5	Jacks Br	1
2006-2009	Crane Creek	4.5	Indian Camp Br	1
2007	Tammasee Cr	1	Bad Creek	1.5
2008-2010	Carrick Creek	3	Pig Pen Br	3
2008-2010	Moody Br.	1	Spoonauger Cr	1
2011-2012	Emory Cr.	2	Bee Cove Cr	1.5
2011-2013	Laurel Fork	1.5	Slicking Cr	5
2014-present	Big Laurel Cr	2.5	Laurel Br	6
2014-present	Little Laurel Br.	1	S. Saluda R	2
2015-present	Side-of-Mtn Cr.	3	Matthews Cr	8
2015-present	Howard Cr.	2.5	Falls Cr	3
			Headforemost Cr	1
	TOTAL RESTORED	25.5	RETAINED	34

Southern Appalachian Brook Trout Restoration



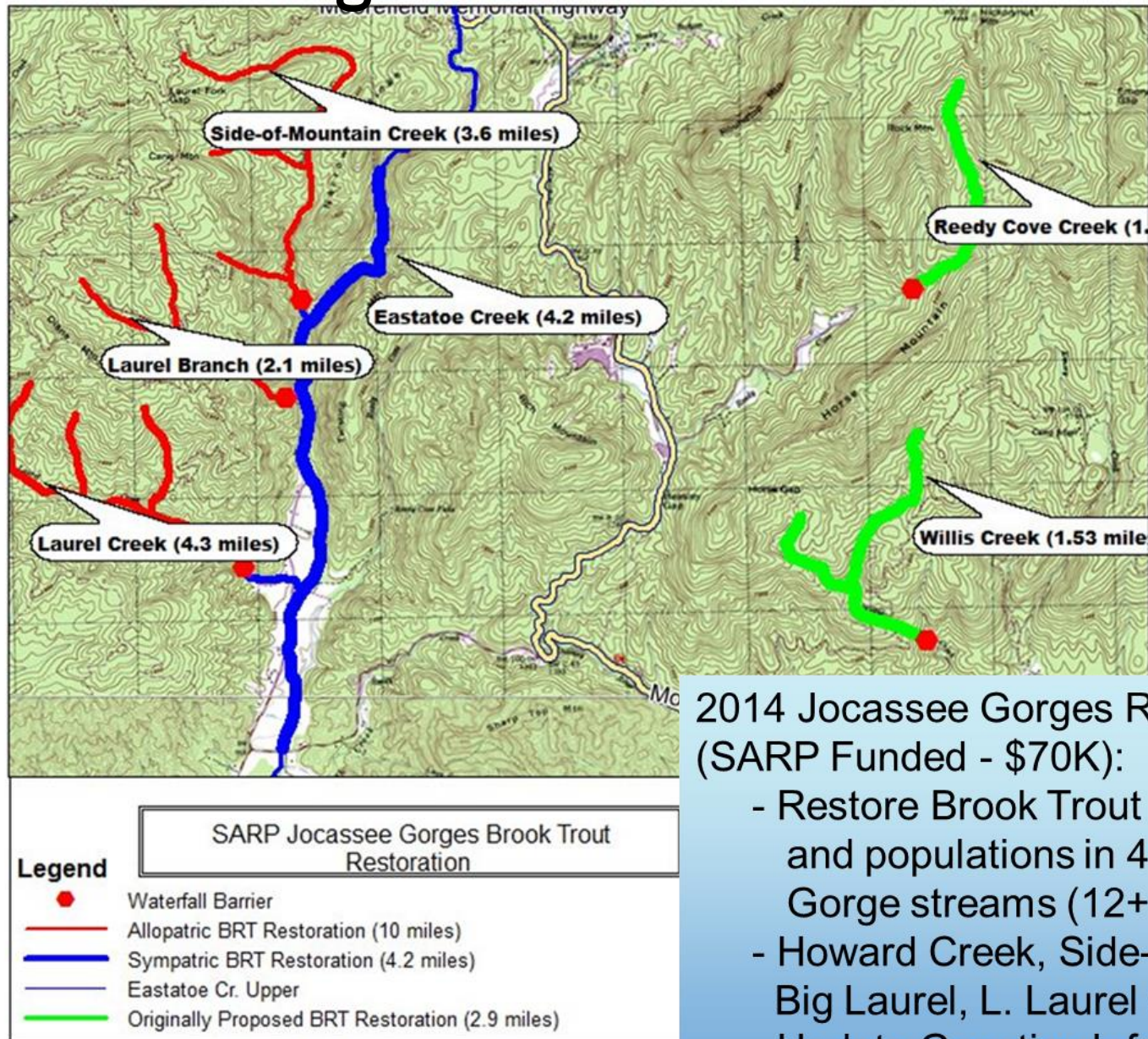
King and Crane Creeks – Sumter National Forest (Oconee County) 2005-2006



CARRICK CREEK – Table Rock State Park (Pickens County)



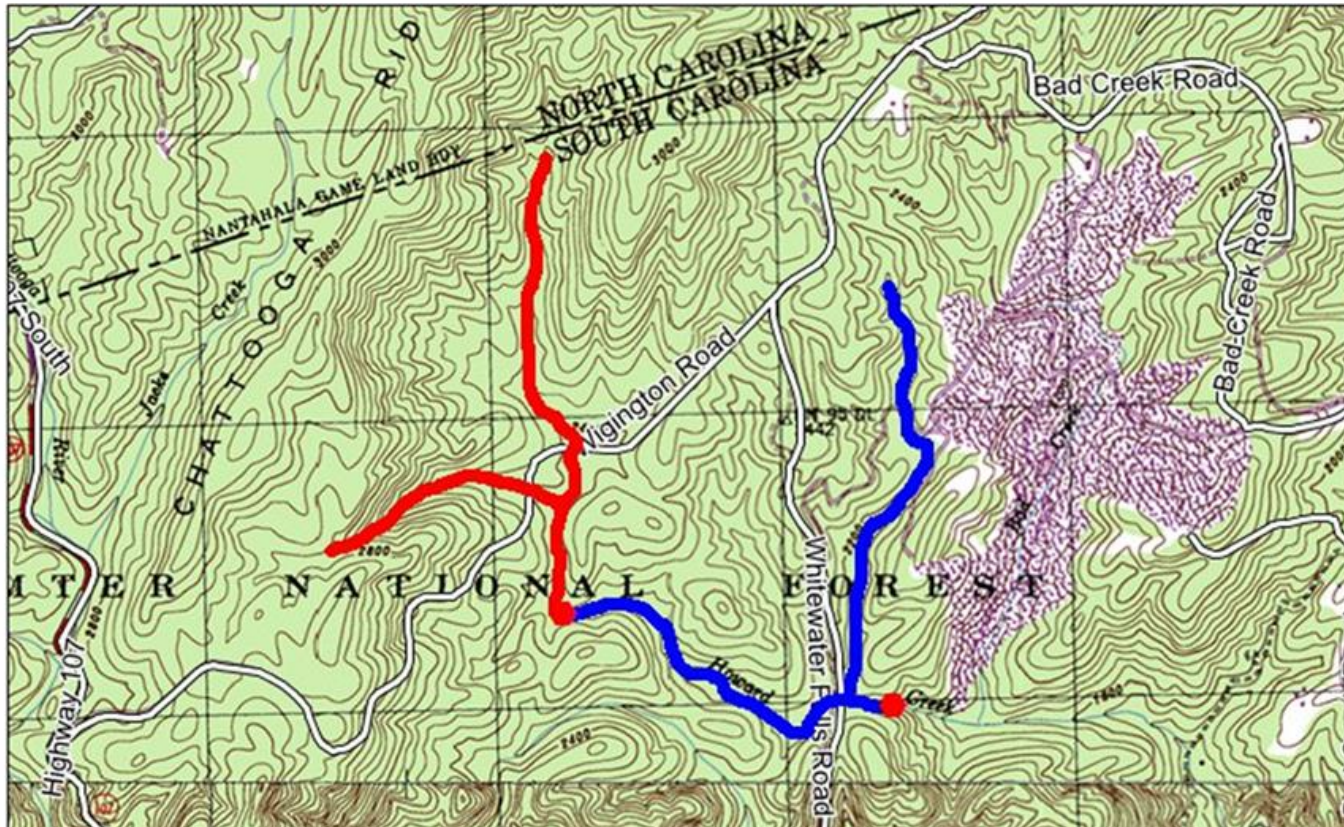
Jocassee Gorges Brook Trout Restoration



2014 Jocassee Gorges Restoration (SARP Funded - \$70K):

- Restore Brook Trout Habitat and populations in 4 Jocassee Gorge streams (12+ miles)
- Howard Creek, Side-of-Mtn, Big Laurel, L. Laurel Creeks
- Update Genetics Information

Howard Creek Brook Trout Restoration



SARP Jocassee Gorges Brook Trout Restoration

Legend

- Waterfall Barrier
- Allopatric BRT Restoration (1.8 miles)
- Non-native Removal Area (2 miles)

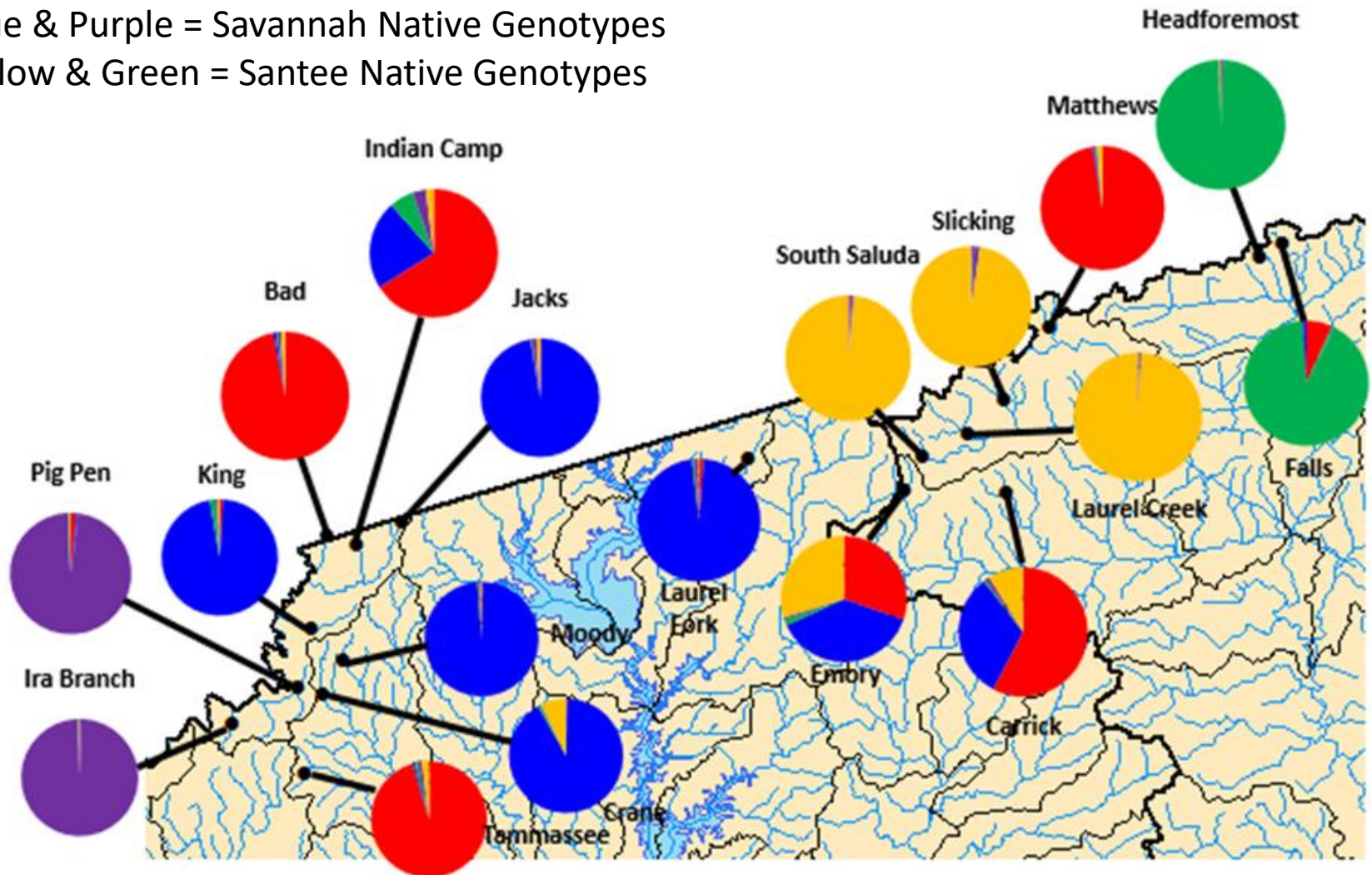


Brook Trout Genetics Study Results

Red = Northern/Hatchery Influence

Blue & Purple = Savannah Native Genotypes

Yellow & Green = Santee Native Genotypes





South Saluda Stream Restoration



QUALITY
WATER



SUSTAINABLE
FUTURE

GreenvilleWater

- Opportunity to secure Santee “Strain” Brook Trout in South Saluda R.
- Many miles of quality streams in North Saluda headwaters – where brook trout extirpated
- GWS funding available
- Larger Streams Connected Habitat
- Potential future public access?

Future Conservation Projects...

