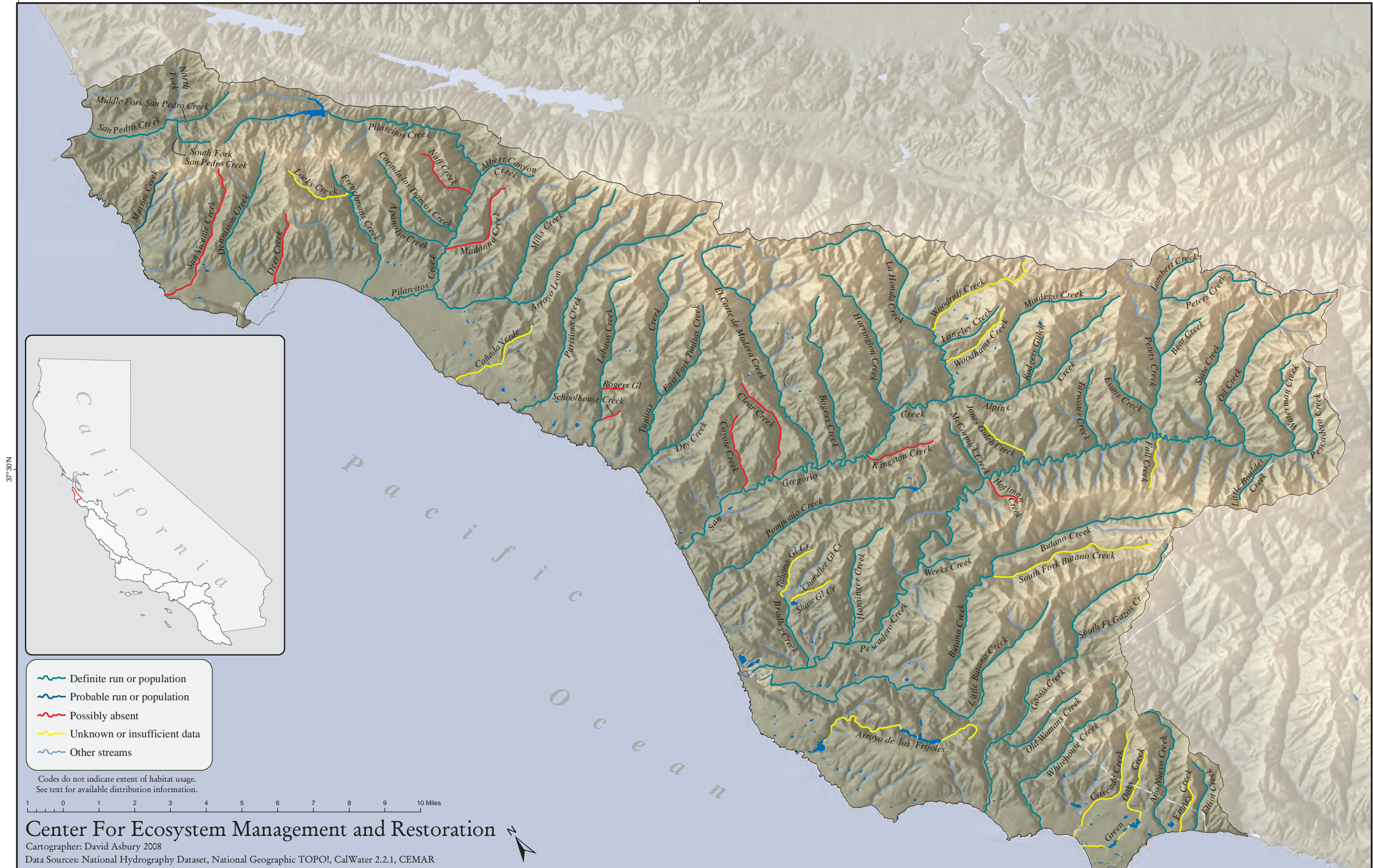


Figure 3. Current status of *Oncorhynchus mykiss* in coastal streams of San Mateo County, California

122°30'W

37°30'N



- Definite run or population
- Probable run or population
- Possibly absent
- Unknown or insufficient data
- Other streams

Codes do not indicate extent of habitat usage.  
See text for available distribution information.

1 0 1 2 3 4 5 6 7 8 9 10 Miles

Center For Ecosystem Management and Restoration

Cartographer: David Asbury 2008  
Data Sources: National Hydrography Dataset, National Geographic TOPOI, CalWater 2.2.1, CEMAR

122°30'W