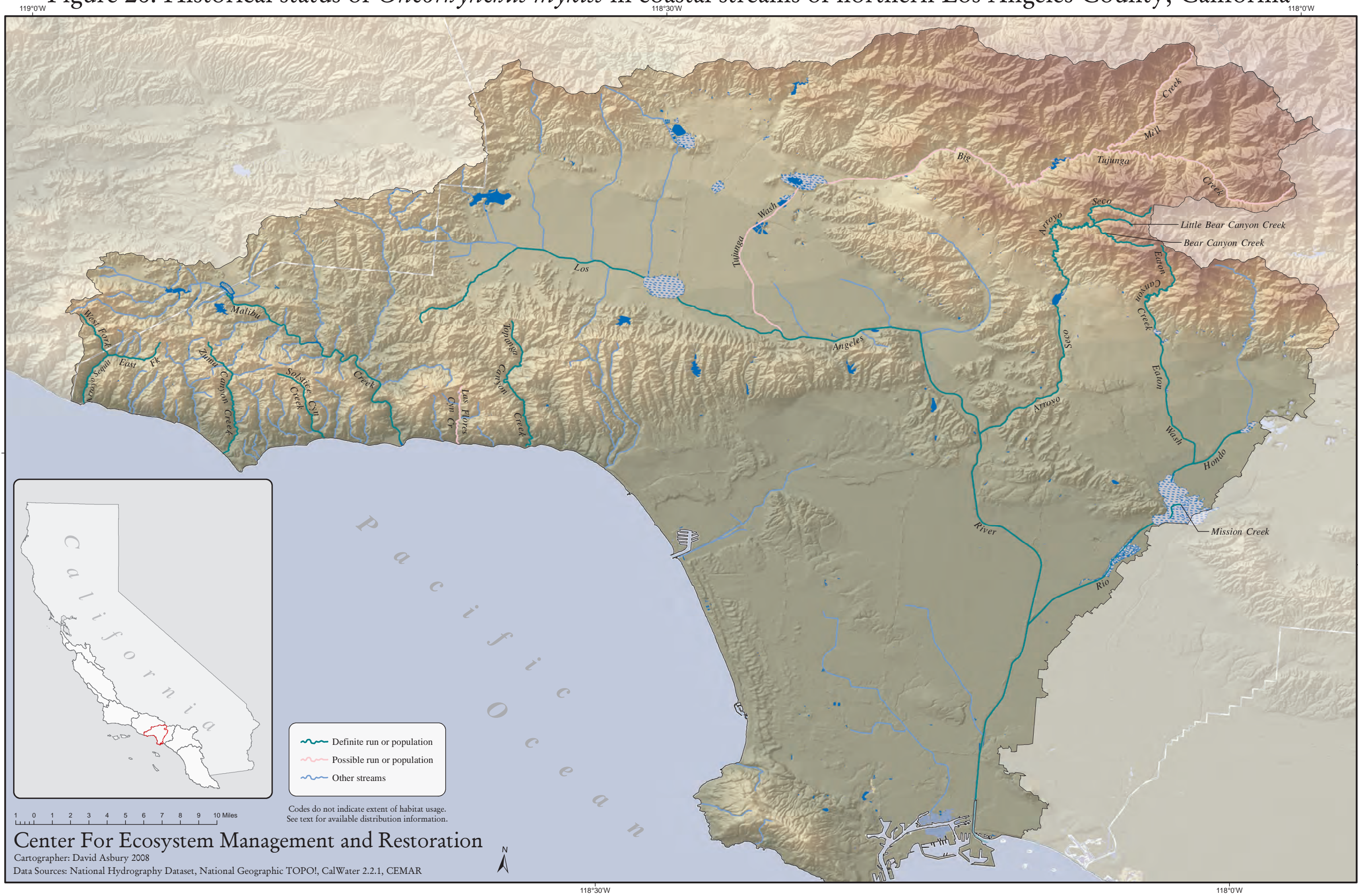


Figure 26. Historical status of *Oncorhynchus mykiss* in coastal streams of northern Los Angeles County, California



1 0 1 2 3 4 5 6 7 8 9 10 Miles

- Definite run or population
- - - Possible run or population
- Other streams

Codes do not indicate extent of habitat usage. See text for available distribution information.

Center For Ecosystem Management and Restoration

Cartographer: David Asbury 2008
 Data Sources: National Hydrography Dataset, National Geographic TOPOI, CalWater 2.2.1, CEMAR



118°30'W

118°0'W

34°0'N

34°0'N