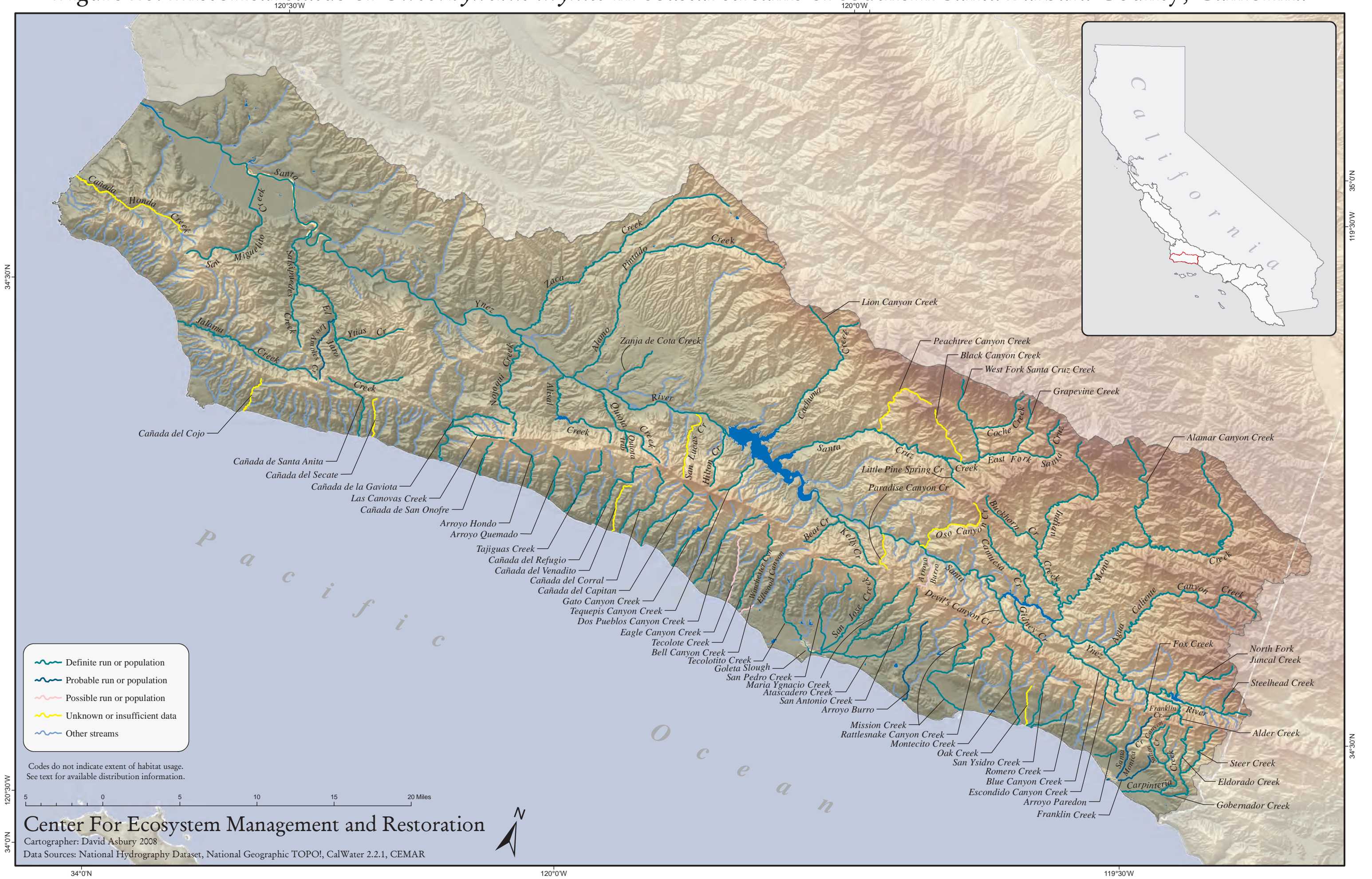


Figure 20. Historical status of *Oncorhynchus mykiss* in coastal streams of southern Santa Barbara County, California



- Definite run or population
- Probable run or population
- Possible run or population
- Unknown or insufficient data
- Other streams

Codes do not indicate extent of habitat usage. See text for available distribution information.

0 5 10 15 20 Miles

Center For Ecosystem Management and Restoration

Cartographer: David Asbury 2008
Data Sources: National Hydrography Dataset, National Geographic TOPO!, CalWater 2.2.1, CEMAR

