

State of the Grassroots

October 2020



TU National Conservation Agenda



Protect



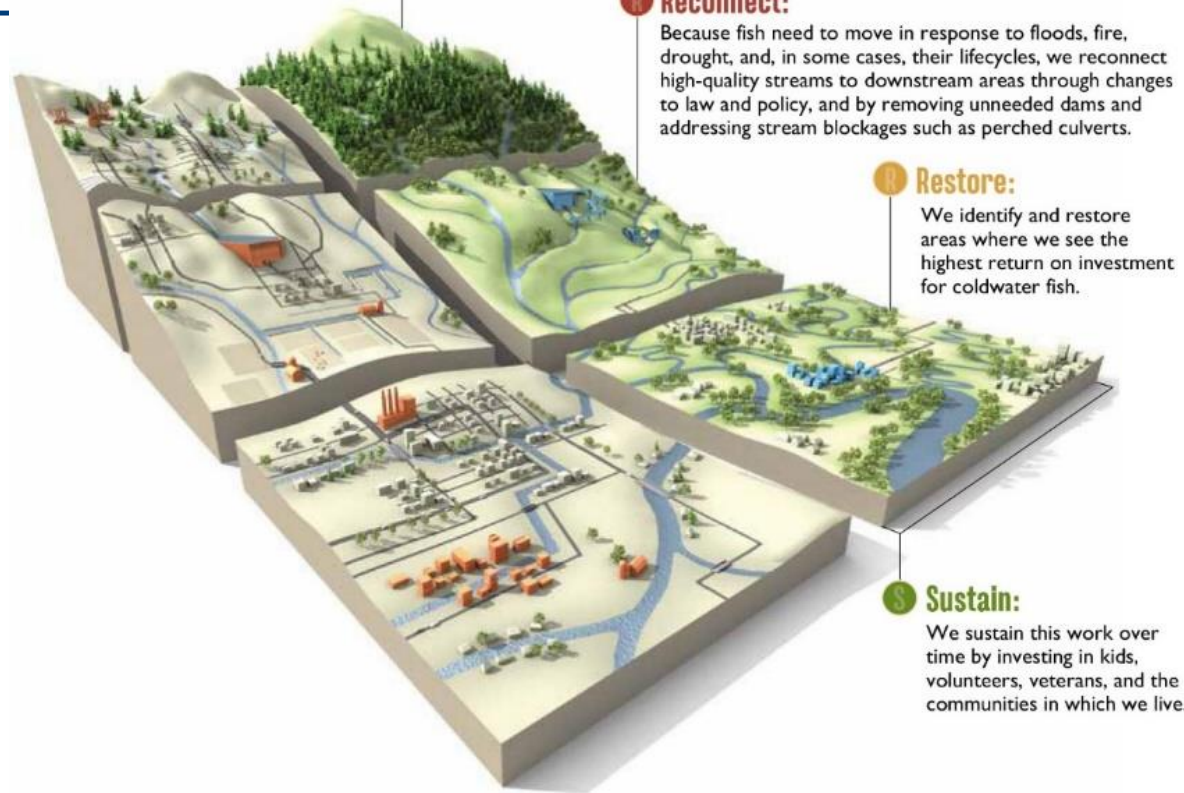
Reconnect



Restore



Sustain



Critical Focus Areas



- ✎ Bristol Bay Pebble Mine
- ✎ Clean Water Act
- ✎ Climate Change
- ✎ Gas & Oil Development (including, but not limited to, withdrawal, distribution, sand mining, and waste management)
- ✎ Good Samaritan Legislation (fix via legislation or administration)
- ✎ Hard Rock Mining Issues
- ✎ Trout Unlimited Capacity
- ✎ Yellowstone National Park Native Fish Conservation

NLC – 2020 Business Plan



- ✦ Enhance Communications Throughout TU
- ✦ Identify and Implement Processes to Increase TU Capacity
 - Business Operations
 - Conservation
 - Development/Fundraising
 - Grassroots Operations
- ✦ Continue Assessment of Organization Efficiency
- ✦ Increase Membership Engagement & Growth
- ✦ Recruit, Mentor and Build Leadership Talent
- ✦ Increase Involvement in Advocacy and Public Policy Issues
- ✦ Strengthen Collaborations of BOT, Chapters, Council, Members and Staff
- ✦ Develop Goals, Objectives and Measurements with Accountability of Results
- ✦ Create and Communicate a Strategic Vision
- ✦ Champion Strategic Plan Review

National Leadership Council: Key Accomplishments



Assessment of organization efficiency

- Variety of changes continued with NLC Representatives, council chairs and workgroup chairs
- [TU.ORG/NLC](https://www.trout.org/nlc) webpage enhanced with key leader information and business documents

Enhance communications throughout TU

- Community Forums established information sharing online for NLC Leaders and Council Chairs
- Community Forums replaced Listserv communication process
- NLC leaders and state council chairs participate in quarterly NLC calls and receive information distributed
- Workgroups developed **message maps** to educate and promote goals and initiatives
- Workgroup reports distributed, posted to Community Forums and [TU.org/nlc](https://www.trout.org/nlc)
- NLC operations reports shared and distributed to Board of Trustees and NLC
- NLC activities and involvement beginning to be included in TROUT media

National Leadership Council: Key Accomplishments



- ✦ **Identify and implement processes to increase TU capacity**
 - Replaced ReadyTalk conferencing with Zoom video conferencing for communication

- ✦ **Strengthen collaborations of BOT, chapters, council, members and staff**
 - Collaboration in state, regional and annual meetings challenging due to COVID-19 pandemic
 - Presentations by NLC officers at annual and Board of Trustee meetings
 - Expanded communications with Community Forums

- ✦ **Increase Capacity for Development/Fundraising**
 - *RallyUp.com* online fundraising process implemented by Volunteer Operations
 - Webinars conducted to promote online fundraising techniques – “Go Beyond the Banquet”

National Leadership Council: Key Accomplishments



Recruit, Mentor and Build Leadership Talent

- Succession Planning of NLC positions enhanced
- Various orientations conducted for new NLC leaders



Increase Involvement in Advocacy and Public Policy Issues

- Promoted and advocated for Bristol Bay, Great American Outdoors Act (Land & Water Conservation Fund), Clean Water Act, Good Samaritan Act and others



Champion Strategic Plan review

- Developing issues and begin reviewing the process for Critical Focus Areas (CFA) and the National Conservation Agenda (NCA) that is visionary for our desired future
- Key Focus: Achieving “One TU”

NLC Workgroups: Conservation



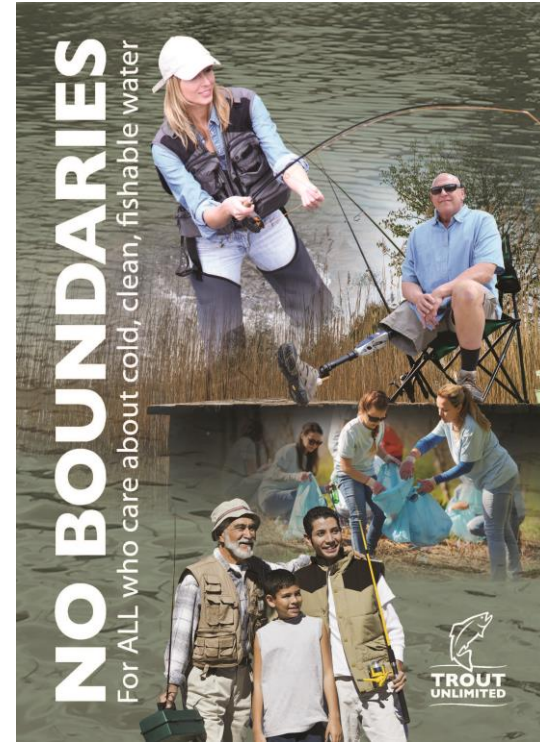
- 🐟 Climate Change
- 🐟 Delaware River
- 🐟 Driftless Area Restoration Effort
- 🐟 Great Lakes
- 🐟 Responsible Mining and Energy
- 🐟 Land Conservancy
- 🐟 Native Trout



NLC Workgroups: Organizational



- 🐟 Communications
- 🐟 Diversity & Inclusion
- 🐟 Grassroots
- 🐟 New Initiatives
- 🐟 Youth Education



Climate Change Workgroup



Chair

- Brian Wagner



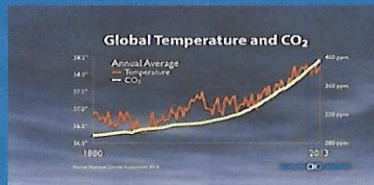
Staff

- Steve Moyer
- Helen Neville

NLC Climate Change Workgroup Message Map

www.tu.org/nlc

#onetu



Facebook: Trout Unlimited
Instagram: @TroutUnlimited
Twitter: @TroutUnlimited

NLC Workgroup Contact Info
Chair: Brian Wagner
bewagner482@gmail.com

Staff contacts:
Helen Neville, Senior Scientist,
Helen.Neville@tu.org

Steve Moyer, VP Government
Affairs, SMoyer@tu.org

Three goals:

1

Raise awareness of climate change by communicating a consistent TU science based message.

2

Utilize our nonpartisan outdoor sportspeople's voice on adaptation & mitigation issues.

3

Build capacity and diversity within the organization through strategic partnerships.

WHY are we doing this?

[Climate change is already impacting our coldwater resources.](#)

Habitat improvements (adaptation) at the core of TU's mission moderate the negative impacts of a changing climate.

However, reducing carbon (mitigation) will be necessary to avoid the most serious threats to our native salmonids.

Workgroup Initiatives

- Developed the volunteer Council Climate Change Coordinator role.
- [Membership surveys.](#)
- Outreach with like-minded groups.
- Partnering with Citizens' Climate Lobby in support of the [Energy Innovation & Carbon Dividend Act.](#)
- [Grassroots blogs.](#)
- [Trout & Climate Change presentation.](#)

How does the Climate Change Workgroup work?

The workgroup is organized as a volunteer led group under TU's NLC and supported by TU Staff and Trustees.

You do not need to be an NLC member to participate.

The Workgroup meets monthly via conference call to share, discuss and review relevant information towards meeting our workgroup goals.

What can I do?

Increase awareness by sharing the resources on [the NLC Climate Change Workgroup page](#) at chapter meetings.

Design and highlight habitat projects featuring adaptation measures to slow the harmful effects of temperature and rainfall extremes.

Incorporate climate change into your chapter's strategic plan.

Promote angler science like stream temperature, flow monitoring, [phenology projects.](#)

Share and like TU climate change blogs and posts on social media.

Participate in Climate Change Focus Group, part of the Online Community. An invitation-only group to share science, articles and thoughtful discussion.

[Partner with your local Citizens' Climate Lobby chapter](#) on advocacy and presentations.

Discuss climate change concerns with legislators during stream walks or in-district visits.

Reduce your own carbon footprint (eg. electric choice).

Delaware River Workgroup



Chair

- Scott Seidman (NY)



Staff

- Jennifer Orr-Greene

NLC Delaware River Workgroup Message Map

www.tu.org/nlc

#onetu



NLC Workgroup Contact Info

Chair: Scott Seidman

TU Staff: Jennifer Orr-Greene

Three goals:

1

To protect and restore the wild trout fishery of the Upper Delaware River, one of the most important tailwater fisheries in the United States

2

To engage conservationists in advocacy efforts to improve the operations of the NYC Delaware River water supply system that ensure maximum protections for the UDR tailwaters

3

To build effective local and regional coalitions that can speak as one voice in support of policies and projects that improve UDR water quality, aquatic habitat, and create world class angling opportunities

WHY are we doing this?

The Upper Delaware River is one of finest wild trout fisheries in the United States and attracts anglers from around the globe.

In the face of increasing pressures, especially climate change, Trout Unlimited and its conservation partners must act now to ensure that the river remains clean and healthy for future generations of anglers.

Workgroup Initiatives

- Engage in advocacy and grassroots organizing efforts to ensure the Flexible Flow Management Plan (FFMP) which governs the operations of the NYC reservoirs is effectively implemented and provides adequate water releases and protection of aquatic habitat and water quality.
- Educate TU Members and watershed stakeholders about the importance of protecting and restoring the Upper Delaware River.
- Represent TU's interests on the Delaware River Basin Commission – SubCommittee on Ecological Flows, the scientific and technical body that studies, evaluates, and makes policy recommendations on a suite of issues that directly impacts the wild trout fishery of the Upper Delaware River.

How does the DELAWARE RIVER Workgroup work?

The Work Group is led by TU volunteers from New York, New Jersey, and Pennsylvania plus national TU staff.

The Work Group hosts an in-person annual meeting and communicates regularly through conference calls and emails.

The Work Group works closely with Friends of the Upper Delaware River and other conservation organizations with an interest in protecting and restoring the wild trout fishery of the Upper Delaware River.

What can I do?

- Contact Work Group Chair to sign up for email updates and actions alerts.
- Attend the annual meeting of the Work Group at the New Jersey Fly Fishing Show in January.
- Educate your local TU Chapter / Council to expand advocacy and outreach efforts.

Visit the following sites for more information:

Office of the Delaware Rivermaster
<https://webapps.usgs.gov/odrm/>

Delaware River Basin Commission-Regulated Flow Advisory Committee
https://www.state.nj.us/drbc/about/advisory/RFAC_index.html

Pennsylvania Fish and Boat Commission
<https://www.fishandboat.com/Pages/default.aspx>

New York State Department of Environmental Conservation
<https://www.dec.ny.gov/outdoor/fish/ng.html>

New York City Department of Environmental Protection
<https://www1.nyc.gov/site/dep/water/reservoir-levels.page>

Friends of the Upper Delaware River
www.fudr.org

Driftless Area Restoration Effort (DARE) Workgroup



Chair

- Bob Soddors (IA)

**NLC
TUDARE (Trout
Unliited Driftless
Area Restoration
Effort)
Message Map**

www.tu.org/nlc



Facebook: Trout Unlimited
Instagram: @TroutUnlimited
Twitter: @TroutUnlimited

[NLC Workgroup Contact Info](#)
Chair: Bob Soddors
bsoddors@buildwithball.com
(515) 208-0747

Three goals:

1

Reduce soil erosion and pollution.

2

Improve habitat supporting coldwater fish species.

3

Expand recreational opportunities.

WHY are we doing this?

We endeavor to improve water quality throughout the region and provide great fisheries for generations to come with increased angler access.

Workgroup Initiatives

- Project planning/Dilligent execution
- Building trust/Alliances
- Stewardship/Monitoring
- Improved water quality
- Great fisheries
- Multiple species benefits
- Angler access
- Innovative and durable projects
- Reconnecting streams with floodplains
- Buffer streams against climate change
- Encouraging and exchanging research on riparian restoration.

How does the TUDARE Workgroup work?

The workgroup is organized as a volunteer led group under TU's NLC and supported by TU staff and Trustees

You do not need to be an NLC member to participate

The Workgroup meets monthly via conference call to share resources, at the TU Regional Rendezvous and the Annual Meeting

What can I do?

Visit www.tu.org often to check out the resources and information available

Volunteer! There are many opportunities to get involved. Contact Jeff Hastings or Bob Soddors to get involved.

Visit:
<https://www.facebook.com/TU-Driftless-Area-Restoration-Effort-TUDARE-165502783482372/> for more information/ activities we have planned.

Utilize the [TU Capacity wheel](#) to encourage multiple levels of involvement

Join us on a monthly phone conference for ideas and information regarding ongoing efforts.

Create a plan for your council/chapter that details how you can volunteer to assist restoration efforts, communication strategies for future planning

Reach out to the TU community for support and assistance.

Great Lakes Workgroup



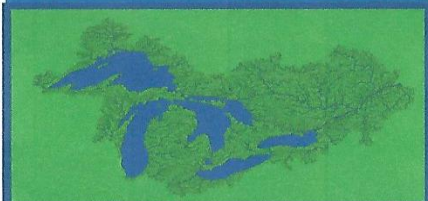
Chair

- Robb Smith (MI)

NLC Great Lakes Workgroup Message Map

www.tu.org/nlc

#onetu



Facebook: Trout Unlimited
Instagram: @TroutUnlimited
Twitter: @TroutUnlimited

NLC Workgroup Contact Info

Chair: Robb Smith
Great Lakes Coordinator:
Taylor Ridderbusch

Three goals:

1

Communicate the value of cold water resources contained within the Great Lakes Basin

2

Identify the threats to this unique cold water ecosystem

3

Advocate for policies that protect, reconnect, and restore cold water habitat within the Great Lakes

WHY are we doing this?

Policy decisions affecting the health of the Great Lakes Basin are under regular review at the state, federal, and international level.

These policy decisions can be influenced by communicating TU's concerns and preferred outcomes.

TU's policy positions are tied to a deep understanding of the watershed itself, and the major threats facing this unique ecosystem.

Workgroup Initiatives

- Publish the CASE FOR THE GREAT LAKES document
- Present issues at community events
- Present issues at local chapter and community events
- Present issues at Regional Rendezvous vents
- Present issues at Annual Meeting forums
- Present issues within TROUT magazine

How does the GREAT LAKES Workgroup work?

The workgroup is organized as a volunteer led group under TU's NLC and supported by TU staff and Trustees

You do not need to be an NLC member to participate

The Workgroup meets bi-monthly via conference call to share resources, at the TU Regional Rendezvous and the Annual Meeting

What can I do?

Join us on a bi-monthly communication phone conference for ideas and networking support.

Remain aware of Great Lakes issues that can impact your community at the local, state and federal levels.

Get involved with organizations that have concerns for the health and future of the Great Lakes

Advocate for good cold water legislation and regulations to your local decision makers

Share your concerns and activities with the Great Lakes Workgroup

Reach out to the TU community for support and assistance. There is a wide variety of expertise in the GLWG network that can offer insight and suggestions for raising awareness and taking action.

Responsible Mining and Energy Workgroup



Chair

— Harry Murphy (MT)

NLC Responsible Mining and Energy Workgroup Message Map

"Advocating for responsible mining and energy development for coldwater fisheries and their watersheds"



Facebook: Trout Unlimited
Instagram: @TroutUnlimited
Twitter: @TroutUnlimited

Three goals:

1

Provide a set of useful tools for chapters and councils that find themselves confronted by an extraction or energy project that could have a negative impact on cold water resources.

2

Work with all stakeholders and interested parties to ensure that all reasonable efforts are made to avoid or mitigate the impacts that extraction and energy projects may have on coldwater resources.

3

Act as a conduit between TU staff and grassroots membership to provide information and guidance on local and national extraction and energy developments.

Why are we doing this?

Extraction and energy development projects are usually local in nature, chapters and state councils are often not equipped to address these projects on their own.

The workgroup can provide guidance to help build a coalition of interested stakeholders, NGO's and industry experts to engage on projects that could harm coldwater resources.

How does the Responsible Mining and Energy Workgroup work?

The workgroup is organized as a volunteer led group under TU's National Leadership Council (NLC) and supported by TU staff and Trustees.

You do not need to be an NLC member to participate.

The workgroup meets monthly via conference call to share resources, at the TU Regional Rendezvous and the Annual Meeting.

What can I do?

Visit www.tu.org often to check out the resources and information available for dissemination to membership.

Join us on a monthly responsible mining and energy workgroup phone conference.

Contact your state and national legislators to support responsible mining and energy development legislation.

Go to; www.tu.org/nlc and click on the responsible mining and energy work group page to download the Mining Handbook.

<https://www.tu.org/energy/low-potential-lands-campaign/> for more information about TU's low potential energy campaign and energy assessment tools.

<https://www.tu.org/criticalminerals/> for more information about TU's critical minerals campaign.

<https://www.tu.org/goodsam/> for more information about TU's Good Samaritan campaign.

To take action visit <https://standup.tu.org/>.



Land Conservancy Workgroup



Chair

- Bill Pastuszek (MA)

www.tu.org/nlc
#onetu



Workgroup Goals:

- 1
 - Help achieve TU's goal of protecting the best cold water stream habitat
- 2
 - Encourage and facilitate the collaboration of TU with land trusts
- 3
 - Encourage land trusts to seek out the assistance and expertise of TU to build partnerships that achieve the missions of both.

WHY are we doing this?

Throughout the US, many intact or unrestored streams that have potential for improvement are on private lands that are at risk of development or subject to potentially damaging land uses.

TU is not a land trust, but has a record of working collaboratively with land trusts to protect important trout habitat.

Anglers and TU members are important potential partners with land trusts that can help them identify, protect and care for high quality cold water streams.

Workgroup Initiatives

Seek ways to publicize TU Coldwater Land Conservancy Fund (CLCF) successes so as to encourage TU chapters and Councils to reach out to land trusts and engage them in efforts to identify, protect and steward cold water resources.

Continue to provide grants to chapters and Councils through the Cold Water Land Conservancy Fund (CLCF) to help them fund land protection projects that achieve TU's "Protect" goal.

Seek and obtain additional funding to build the CLCF so more important projects can be funded and potentially increase the amount of funding per project.

How does the Land Conservancy Workgroup work?

The Land Conservancy workgroup is organized as a volunteer led group under TU's NLC and includes NLC members and other volunteers supported by TU staff and Trustees.

You do not need to be a member of the NLC to participate

The Workgroup meets every month via conference call to share resources, at TU Regional Rendezvous and the Annual Meeting.

What can I do?

Visit TU.org/NLC to see materials the work group has prepared. Two excellent publications are there. One is for TU chapters on how to work with land trusts and the second is for land trusts on how to work with TU.

Reach out to the land trusts in your chapter's region to find out if they are aware of TU and our mission, if they have projects that involve protecting coldwater resources, and if your chapter can help them.

Here is the link to the materials
you may wish to obtain from the
website:

Land Conservancy Work Group

Contact workgroup chair Bill Pastusek if you are interested in joining the work group and join us on a monthly call.

Discuss with your chapter putting an amount in your annual budget to assist land trusts with important coldwater protection projects in your area, and get advice from the work group on how to evaluate and choose which projects to support.

Reach out to the TU community for support and assistance.
Communication is an achievable goal that will strengthen the message.

Native Trout Workgroup



Chair

- Neil Warner (AZ)

NLC Native Trout Workgroup Message Map

www.tu.org/nlc

#onetu



Facebook: Trout Unlimited
Instagram: @TroutUnlimited
Twitter: @TroutUnlimited

NLC Workgroup Contact Info
Chair: Neil Warner
neilgrantwarner@gmail.com

Three goals:

1

Help Facilitate grassroots implementation of TU's National Conservation Agenda

2

Facilitate education, awareness, restoration and science projects related to native salmonid species

3

Serve as an advocate for Councils and Chapters on Issues related to native species

WHY are we doing this?

To highlight the importance of Native Trout and their watersheds.

To assist Councils and Chapters in their Native Trout efforts

Workgroup Initiatives

- Create a Native Trout Awareness Program Template
- Utilize Trout Magazine to Publish Articles about Native Trout
- Catalog State Council's Native Trout Initiatives and awareness
- Support the Yellowstone National Park Volunteer Fly Fishing Program
- Publish a Brook Trout Poster
- Enhance Native Trout Resource page on tu.org

How does the Native Trout Workgroup work?

The workgroup is organized as a volunteer led group under TU's NLC and supported by TU staff and Trustees

You do not need to be an NLC member to participate

The Workgroup meets the 4th Wednesday of the month via conference call to share resources, at the TU Regional Rendezvous and the Annual Meeting

What can I do?

Visit www.tu.org often to check out the resources and information available for dissemination to membership

Become aware of the Native Trout in your State and what projects are being done to protect them.

Visit <https://www.tu.org/get-involved/volunteer-tacklebox/council-leader-resources/national-leadership-council/nlc-conservation-workgroups/native-trout-workgroup/native-trout-workgroup-resources/> For Native Trout Information

Provide input to the work being done to create a Native Trout Awareness Program Template

Join us on a monthly communication phone conference for ideas and networking support.

Create a plan for your council/chapter that details Native Trout strategies for future planning

Communications Workgroup



Co-chairs

- Kelly Buchta (PA)
- Mary Tealdi (CA)



Staff

- Nick Halle

NLC Communications Workgroup Message Map

www.tu.org/nlc

#onetu



Facebook: Trout Unlimited
Instagram: @TroutUnlimited
Twitter: @TroutUnlimited

NLC Workgroup Contact Info

Chair: Kelly E. Buchta
Secretary: Mary Tealdi
Staff Contact: Nick Halle

Three goals:

1

Clarify and communicate the role and function of National Leadership Council (NLC) to all parts of TU

2

Facilitate communications among all NLC work groups (WG)

3

Foster communications to/from NLC to council and chapter levels

WHY are we doing this?

TU members and volunteer leaders often report that communication efforts are weak and lacking

TU needs the support of NLC representatives to strengthen communication across council and chapter levels

Volunteer leaders play a vital role in communication to all TU members and carry our message

Workgroup Initiatives

- tu.org
- Social Media: Facebook, Instagram, Twitter
- TROUT Magazine
- Lines to Leaders
- Community Forum
- TU Volunteer Leaders Forum
- TU Action Alerts
- TU App
- Conference Calls
- Webinars/web training
- Regional Rendezvous
- Annual Meeting

How does the Communication Workgroup work?

The workgroup is organized as a volunteer led group under TU's NLC and supported by TU staff and Trustees

You do not need to be an NLC member to participate

The Workgroup meets monthly via conference call to share resources, at the TU Regional Rendezvous and the Annual Meeting

What can I do?

Visit www.tu.org often for resources and information available for dissemination to membership

Focus on the culture of communication within your council/chapter levels. Review what methods are currently used and where concentrated efforts can be made

Visit <https://www.tu.org/get-involved/volunteer-tacklebox/communications-resources/> for modes of communication to help support your needs

Utilize the [TU Capacity wheel](#) to encourage multiple levels of involvement

Join us on a monthly communication phone conference for ideas and networking support.

Create a plan for your council/chapter that details communication strategies for future planning

Reach out to the TU community for support and assistance. Communication is an achievable goal that will strengthen the message

Diversity and Inclusion Workgroup



Co-chairs

- Kelly Buchta (PA)
- Bill Thorne (AR)

NLC Diversity & Inclusion Workgroup Position Message Map

tu.org/diversity

#onetu



**TROUT
UNLIMITED**



Three goals:

1

A more diverse membership profile;

2

A more diverse leadership profile; and

3

A welcoming & inclusive culture at every level of TU.

WHY are we doing this?

TU is falling behind on representing the angling public on about every measurable data point.

TU needs the strength and viewpoints of a diverse culture to confront the many threats facing trout and salmon.

Until we represent a broader group of stakeholders and bring them to the table, TU's solutions remain incomplete.

What can I do?

- Visit tu.org/diversity to check out the many resources available.
- Join us on a monthly diversity & inclusion phone conference.
- Focus on the culture of inclusion at your local TU chapter level. Small things like having nametags can make a big difference.
- Partner with groups that target underrepresented demographics in the outdoors.
- Promote your chapter to new audiences.
- Diversify your events. Plan events that focus on conservation and not only fly-fishing trips.

How does the Diversity & Inclusion Workgroup work?

The initiative is organized as a volunteer-led workgroup under TU's National Leadership Council (NLC) and supported by TU staff.

You do not need to be a NLC Representative to participate.

The workgroup meets monthly on the phone to share resources, at the TU Regional Rendezvous, and at the TU Annual Meeting.

So why all the focus on women's specific events?

Six percent of TU's members are women, when RBFF cites that 31 percent of all fly-fishing participants are women.* This, therefore, remains a central focus of the workgroup.

Women's specific events are just one tool we use to engage women with fly fishing and conservation in a comfortable environment. The ultimate goal is integration.

Why the title DIVERSITY and INCLUSION?

In 2011, the workgroup started with a focus on engaging women, but in 2017, the workgroup voted to expand its focus.

The expanded focus promotes out-of-the-box, inclusive thinking that incorporates all ethnicities, ages, genders, interests, and geographical locations.

Women's Initiative coordinators are still encouraged at the chapter or council level and would fall under the diversity & inclusion umbrella.

Grassroots Workgroup



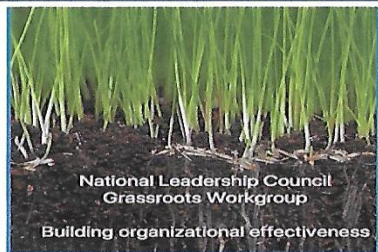
Chair

- Don Haynes (MD)

NLC Grassroots Workgroup Message Map

www.tu.org/nlc

#onetu



The mission of the Grassroots workgroup is to continuously assess and assist effectiveness of our chapters and councils and to develop tools and resources for improvement.

NLC Workgroup Contact Info

Chair: Don Haynes
Dhaynes8320@gmail.com

Current goals:

1

Assess impediments to leadership development

2

Implement tools to make training materials more accessible

3

Assist new leaders in adapting to new role

WHY are we doing this?

Volunteer leaders find it difficult to get information relevant to their roles.

Leaders are often unaware of readily available resources.

New leaders often assume roles without proper training or critical information.

Workgroup Initiatives

- Make leader tools at TU.Org more accessible.
- Continuously review chapter performance reporting
- Create an effective site map for resources
- Make TU Leadership manual more accessible
- Create TU-101 as an introduction for new leaders.
- Make better use of TU Volunteer Leaders Forum
- Add leadership material to "Lines for Leaders"

How does the Grassroots Workgroup work?

The workgroup is organized as a volunteer led group under TU's NLC and supported by TU staff and Trustees

You do not need to be an NLC member to participate

The Workgroup meets periodically via conference call to share resources, at the TU Regional Rendezvous and the Annual Meeting

What can I do?

Visit www.tu.org often to check out the resources and information available for leaders

Focus on how your chapter or council recruits and trains new leaders. Make a succession plan to ensure continuity of quality leadership. Contact the Workgroup chair for more information.

Visit https://www.tu.org/wp-content/uploads/2019/08/Volunteer_Operations_Tacklebox_Roadmap_June_2019.pdf to review the wide variety of leadership tools available.

Utilize the [TU Capacity wheel](#) to encourage multiple levels of involvement

Join our Workgroup and share your leadership experiences with other leaders. Participate in the Leaders Forum on the TU Community Forum: <https://community.tu.org/home>

Reach out to the TU community for support and assistance.

New Initiatives Workgroup



Chair

- Mark Dillow (TX)

NLC New Initiatives Workgroup Message Map

www.tu.org/nlc

#onetu



Facebook: Trout Unlimited
Instagram: @TroutUnlimited
Twitter: @TroutUnlimited

[NLC Workgroup Contact Info](#)
Chair: Mark Dillow
newinitiatives@tu.org

Three goals:

1

Act as the nominating Committee of the NLC for:

- NLC Officers
- Grassroot Trustees
- Embrace a Stream Committee

2

National Conservation Agenda Review

3

Critical Focus Area Review

WHY are we doing this?

A well-managed, inclusive and transparent process for the nomination of key volunteer positions is crucial to the credibility, effectiveness and sustainability of the TU mission.

The National Conservation Agenda is the key guiding document in the implementation of TU's mission. Regular review, measurement of effectiveness and updates keep the mission

Workgroup Initiatives

- Generation of Grassroot Trustee nomination package
- Facilitation of GT interview process
- Submission of slate of GT candidates to the NLC
- Facilitate NLC Vote for EAS Committee Candidates
- Effectiveness analysis of National Conservation Agenda (metrics)

How does the New Initiatives Workgroup function?

The workgroup is organized as a volunteer led group under TU's NLC and supported by TU staff and Trustees

You do not need to be an NLC member to participate

The Workgroup meets on an as-needed basis via conference call, and the Annual Meeting


What can I do?

Become informed!

Volunteer to participate in the nominations processes. We need one or two interviewers, but also need a robust committee to review candidates and provide feedback for a slate of candidates to be submitted to the NLC at large. Contact the committee chair for more information or to volunteer.

Participate in scheduled calls and provide your input when we review the National Conservation Agenda and the associated Critical Focus Areas. We really want to ensure we can measure our success in this area.

Youth Education Workgroup

-  **Chair:** Linn Beck (WI)
-  **Vice Chair:** Mary Tealdi (CA)

NLC Youth Education Workgroup Message Map

www.tu.org/nlc

#onetu



Facebook:
<https://www.facebook.com/tuheadwaters/>

[NLC Workgroup Contact Info](#)

Chair: Linn Beck

Vice-chair: Mary Tealdi

Three goals:

1

Communicate the Stream of Engagement to Chapter and Council Leadership

2

Increase the number of Chapter/Council Youth Education Coordinators (YECs)

3

Enhance existing programs for youth who desire more engagement with TU

WHY are we doing this?

TU recognizes that the values of TU need to be passed on to the conservationists of tomorrow.

Programs to educate youth in the science of fish and their habitat need ongoing work to enhance opportunities for young people to stay engaged with TU.

YECs at the chapter and council level need consistent messaging on programs to enable success in the various activities that make up TU's Stream of Engagement.

Workgroup Initiatives

- tu.org
- Social Media: Facebook
- TROUT Magazine
- Lines to Leaders
- Community Forum
- TU Volunteer Leaders Forum
- GRTU Tomorrow Fund
- YEC recruitment for work group involvement
- Listserv (NLC reps)
- Conference Calls
- Webinars/web training
- Regional Rendezvous
- Annual Meeting

How does the Youth Education Workgroup work?

The workgroup is organized as a volunteer-led group under TU's NLC and supported by TU staff and Trustees

Any TU member can be in the Youth Education Workgroup.

The Workgroup meets monthly via conference calls to share resources; members also attend the TU Regional Rendezvous and the Annual Meeting

What can I do?

Visit www.tu.org/headwaters often to check out updates and about the Headwaters Youth Program.

Your chapter/council can donate to the GRTU Tomorrow Fund to help support the Headwaters Youth programs: www.tu.org/tomorrowfund

You can participate in our many webinar training programs designed for enhancing your youth programs.

You can join us in our youth outreach efforts focusing on all Headwaters Youth Programs available to your chapter and councils.

You can join the Youth Education work group on a monthly phone conference for ideas and networking support.

You can create a plan for your council/chapter that details youth education strategies for future planning and chapter growth.

You can develop youth education programs that are fun and a great opportunity for ensuring vitality in your chapter/council.

By the next generation,
Trout Unlimited will ensure that
robust populations of native and wild coldwater fish
once again thrive within their North American range,
so that our children can enjoy healthy fisheries in their home waters.